

COGNEX

Lead with Speed

Setting the pace of machine vision

In-Sight 3800 Series



In-Sight 3800 Series

All-in-one vision system meets all your vision needs

High speed, high resolution, high flexibility. The In-Sight® 3800 has it all.

This advanced vision system provides a powerful, yet easy-to-use, solution for automated inspections. Embedded with a full set of robust rule-based tools and innovative edge learning technology, In-Sight 3800 solves a range of manufacturing applications, from defect detection and assembly verification to character reading and more.

- Run more inspections in less time.
- Improve the accuracy of your results.
- Seamlessly scale your solution.

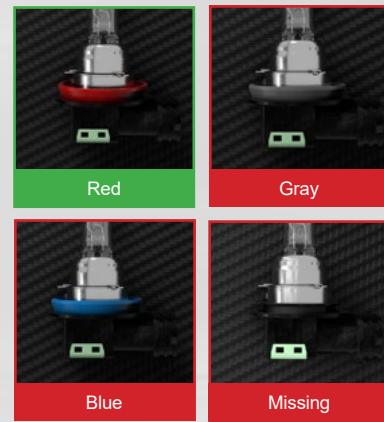
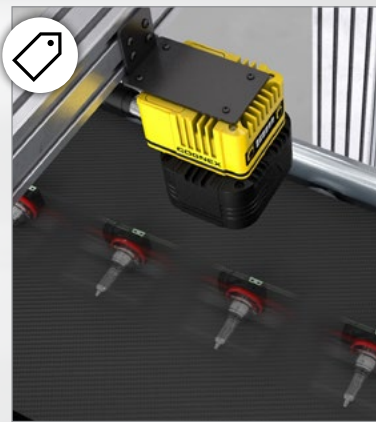


Run more inspections in less time

Maximize throughput with high-speed processing and quick setup.

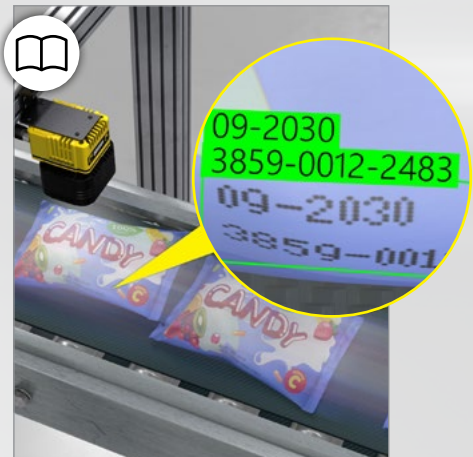
Tools running 2X faster than previous generation vision systems offer ultimate power and performance for any job

➔ PAGE 4



Advanced defect detection and OCR functionality automates a variety of tasks, from simple to complex

➔ PAGE 4



Improve the accuracy of your results

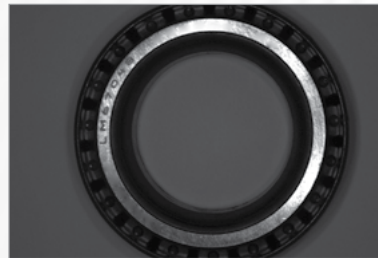
Generate high-resolution, high-contrast images that detect even the most subtle defects.

Integrated multi-color lighting accommodates a range of application requirements and operating conditions

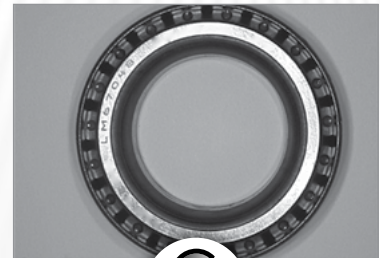
➔ PAGE 12

Unique high-dynamic range plus (HDR+) technology optimizes image formation in a single acquisition

➔ PAGE 13



Without HDR



Seamlessly scale your solution

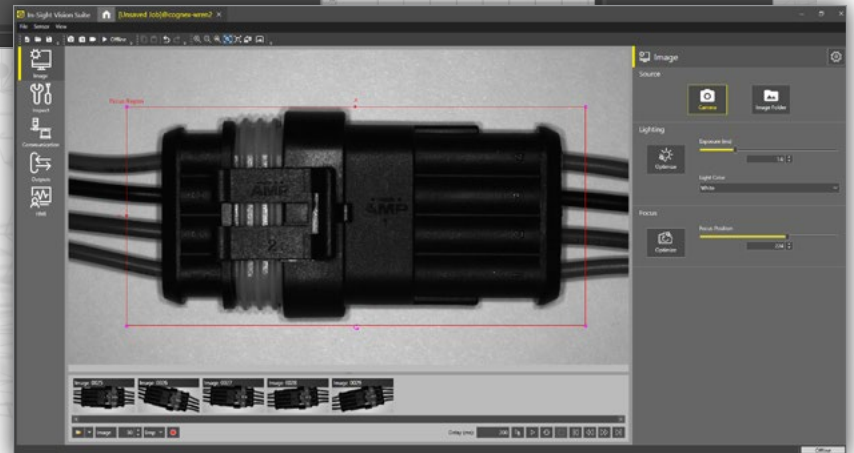
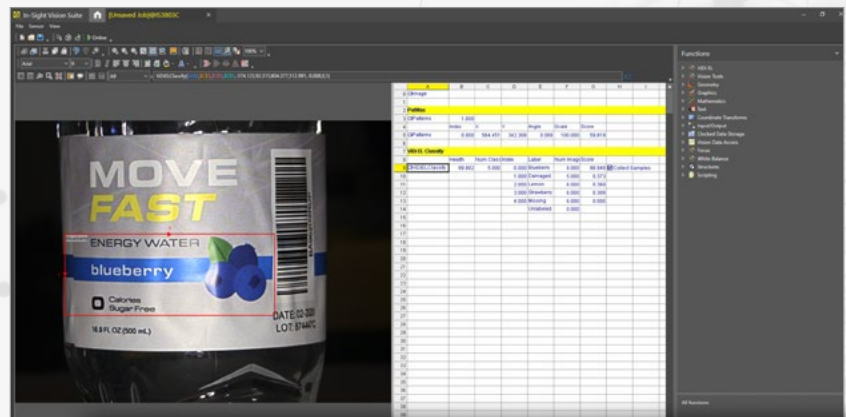
Create jobs in a common software platform that supports scalability across In-Sight products and offers both point-and-click and advanced setup options.

Robust spreadsheet-based job creation enables more control over tool parameters for complex tasks

➔ PAGE 9

Intuitive EasyBuilder® interface simplifies the training workflow for quick deployment

➔ PAGE 10




Comprehensive toolset solves tasks of varying complexity

Integrating AI and rule-based tools in a single vision system, the In-Sight 3800 addresses a wide range of error-proofing applications. The tools can be used individually for simple jobs or combined to automate more challenging problems.



2–6X faster
tool processing speeds
than previous systems*



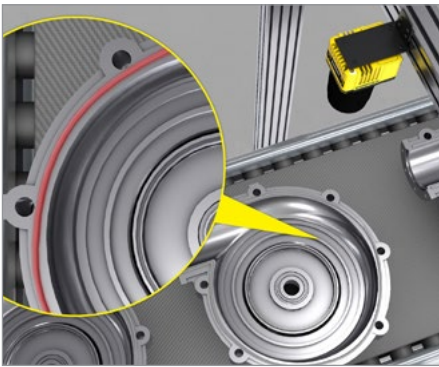
Up to 2,500 parts/minute
can be inspected
with the In-Sight 3800



AI tools

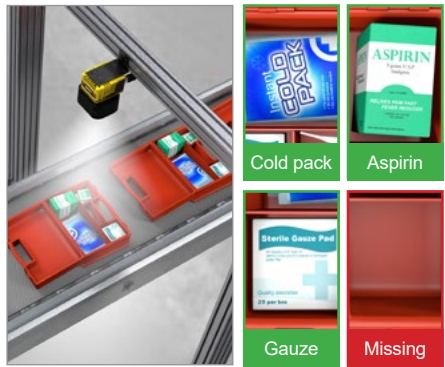
The In-Sight 3800 is embedded with powerful edge learning tools that leverage AI technology to train and process images on device, or “at the edge” of where the data is collected, to deliver accurate results in real time.

Edge learning tools are easy-to-use and simple to deploy with example-based training and no experience needed.



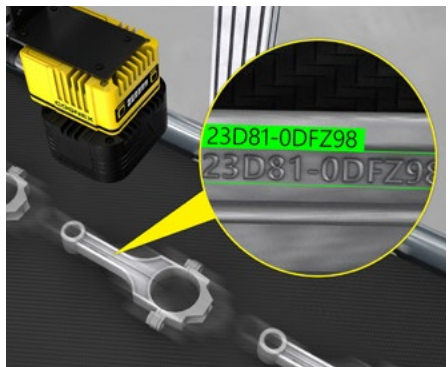
ViDi EL Segment

Extract defects, regions, and objects from complex parts and backgrounds.



ViDi EL Classify

Detect and sort parts based on multiple features or characteristics.



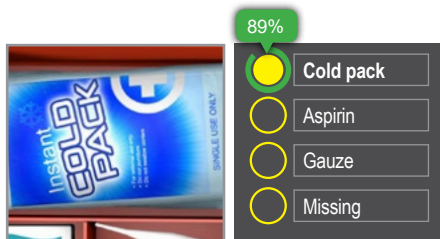
ViDi EL Read

Read characters on reflective, low-contrast, and non-flat surfaces, including multi-line text.



Training

ViDi EL tools can be trained in minutes, using as few as five to ten example images of the relevant classes or characters. Training is done directly on device, without the use of a central processing unit (CPU).



Confidence score

Get real-time, visual feedback on the accuracy of your results. The confidence score verifies whether the ViDi EL tool correctly predicted the output, leading to less manual intervention and more reliable inspections.

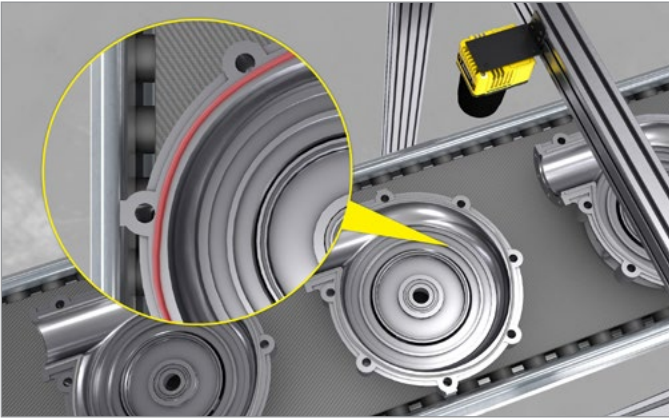


*Rule-based tool performance is 2x faster than In-Sight 7800/7900 series. AI tool performance is 3–6x faster than In-Sight 2800 series.

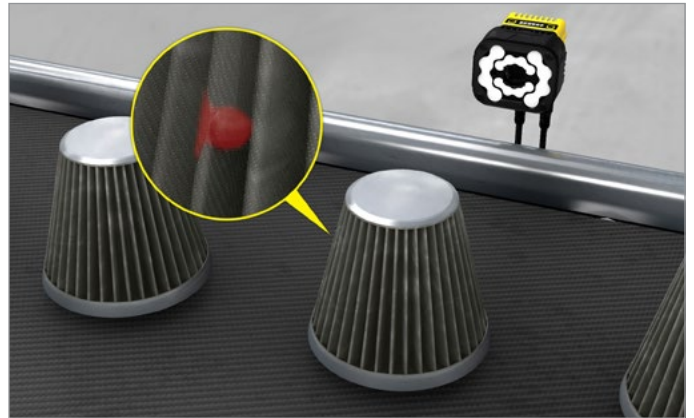


Segmentation examples

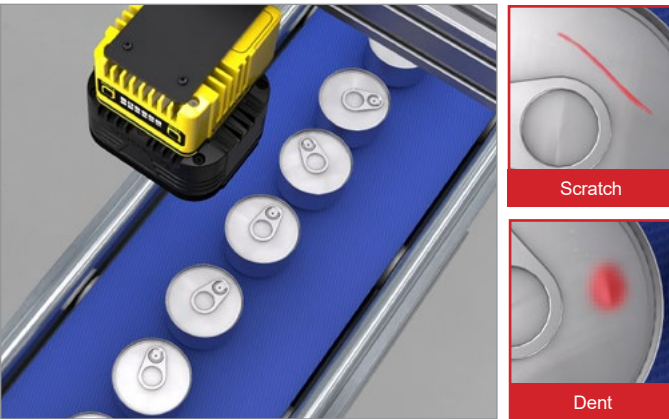
Automotive: Segment nested parts for targeted inspection



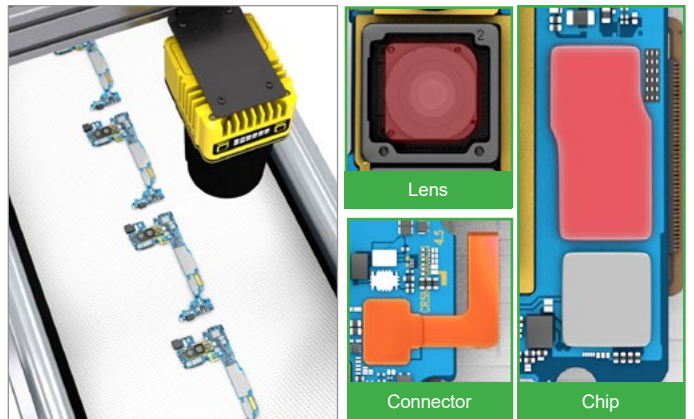
Automotive: Identify subtle, variable defects



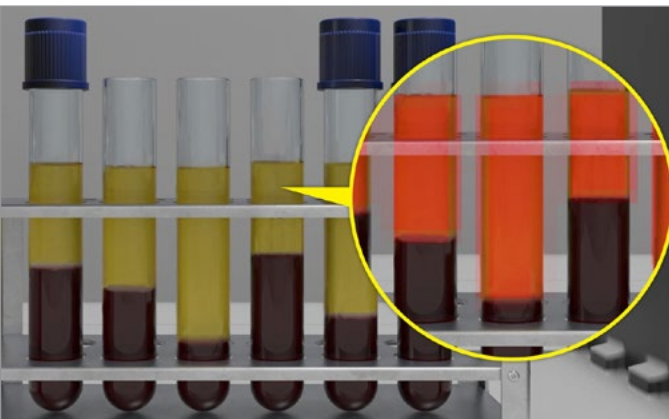
Food and beverage: Detect and classify multiple types of defects



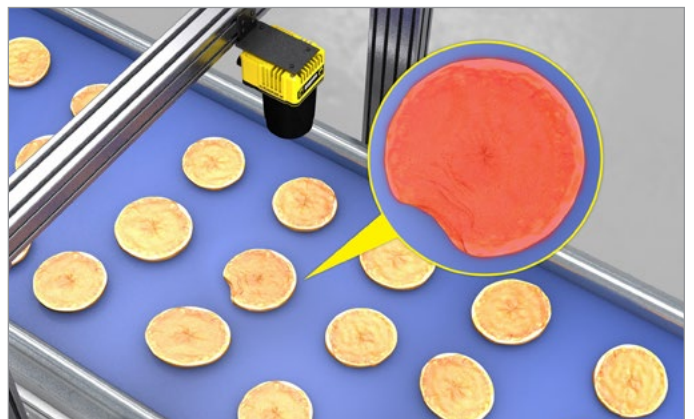
Electronics: Extract different regions in a part and segment them by class



Life sciences: Separate the liquid levels in test tube samples



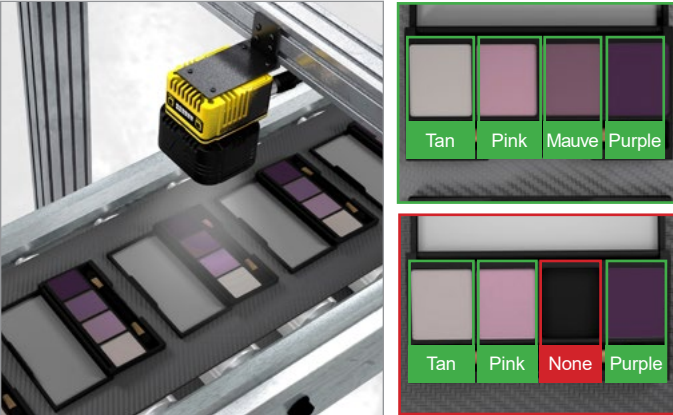
Food and beverage: Ensure shape uniformity of products moving down the line



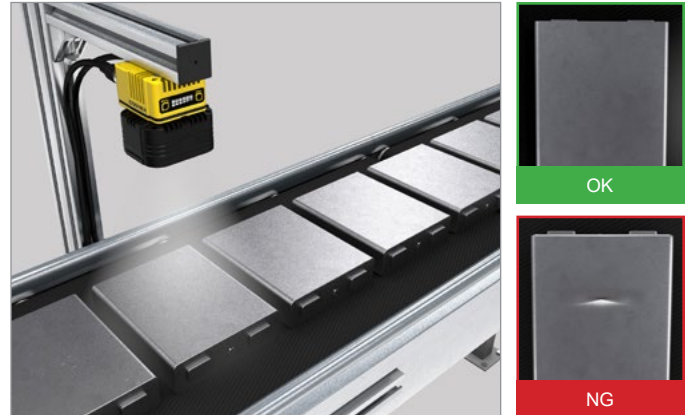


Classification examples

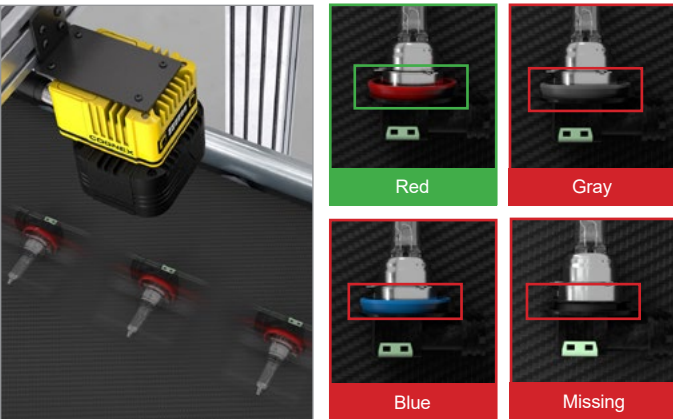
Consumer products: Detect presence/absence in kitted products and run multi-ROI classification



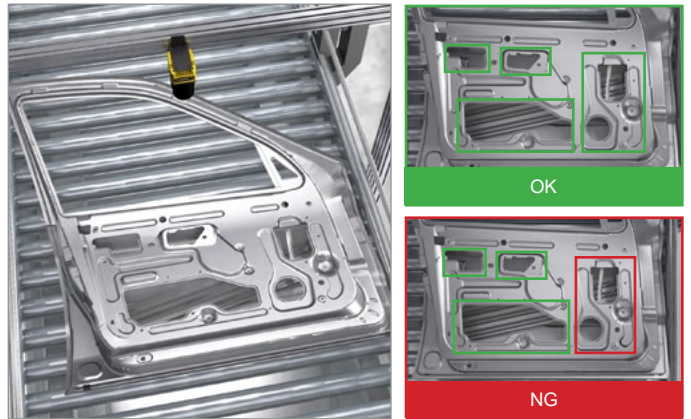
Electric vehicle (EV) batteries: Check parts for surface-level defects



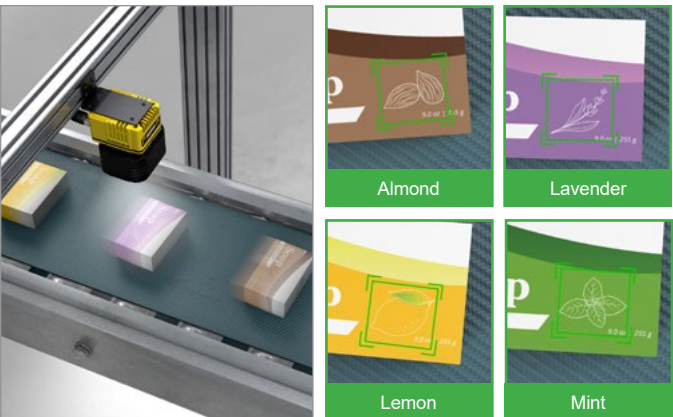
Automotive electronics: Detect presence/absence of components and classify defects



Automotive assembly: Inspect large parts for subtle defects



Consumer products: Classify scents or flavors on packaging



Food & beverage: Identify damaged or missing components





OCR examples

Logistics: Read multiple lines of text on different package types



Consumer product: Decipher lot codes against variable backgrounds



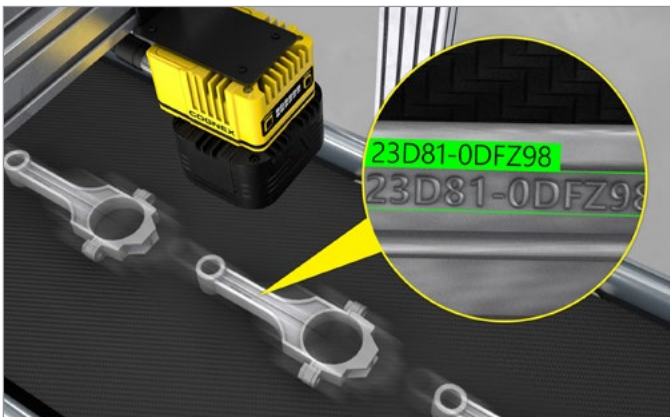
Automotive: Read codes on low-contrast and reflective surfaces



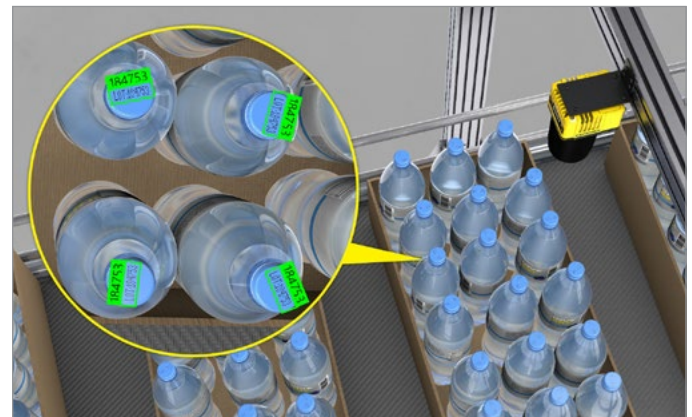
Pharmaceutical: Perform on-line verification at high speeds



Automotive: Decipher hard-to-read text etched on metallic surfaces



Food & beverage: Read lot codes on multiple products at the same time





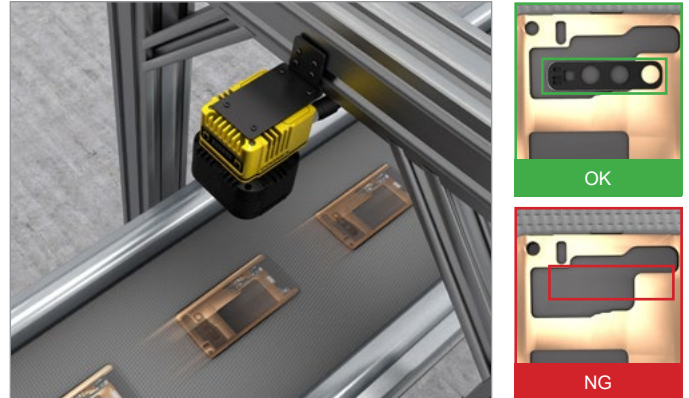
Rule-based vision tools

In-Sight 3800 is also equipped with an extensive library of industry-proven traditional vision tools that allow you to measure distance and blobs, count pixels, and patterns, read codes, guide robots, perform math and logic, and more. These tools run 2X faster on In-Sight 3800 than previous generation products, so you can solve applications more quickly and accommodate faster line speeds.

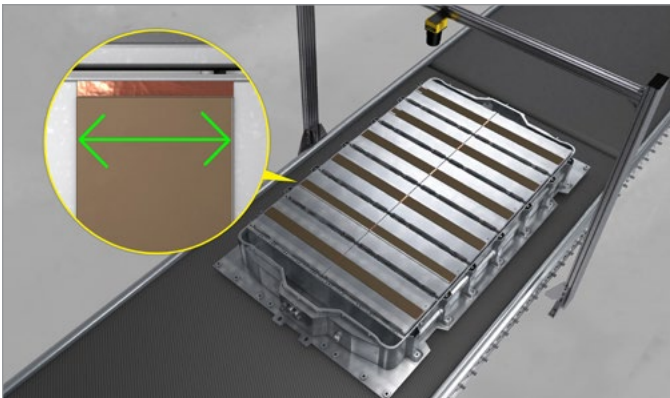
Barcode reading: Read codes on curved surfaces



Brightness: Detect presence/absence of components based on varying brightness levels



Gauging: Detect edges and measure the distance between them



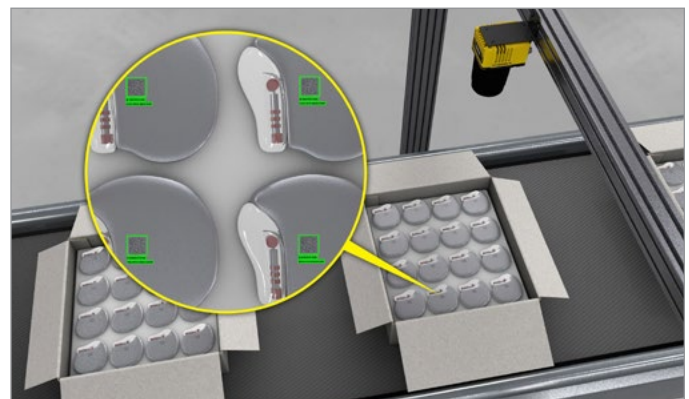
Robotic guidance: Pick and place finished products into bins



Counting: Count components to verify completeness



Code reading and OCR: Read multiple 2D codes and text across a large scanning area



Common software platform offers flexible development options

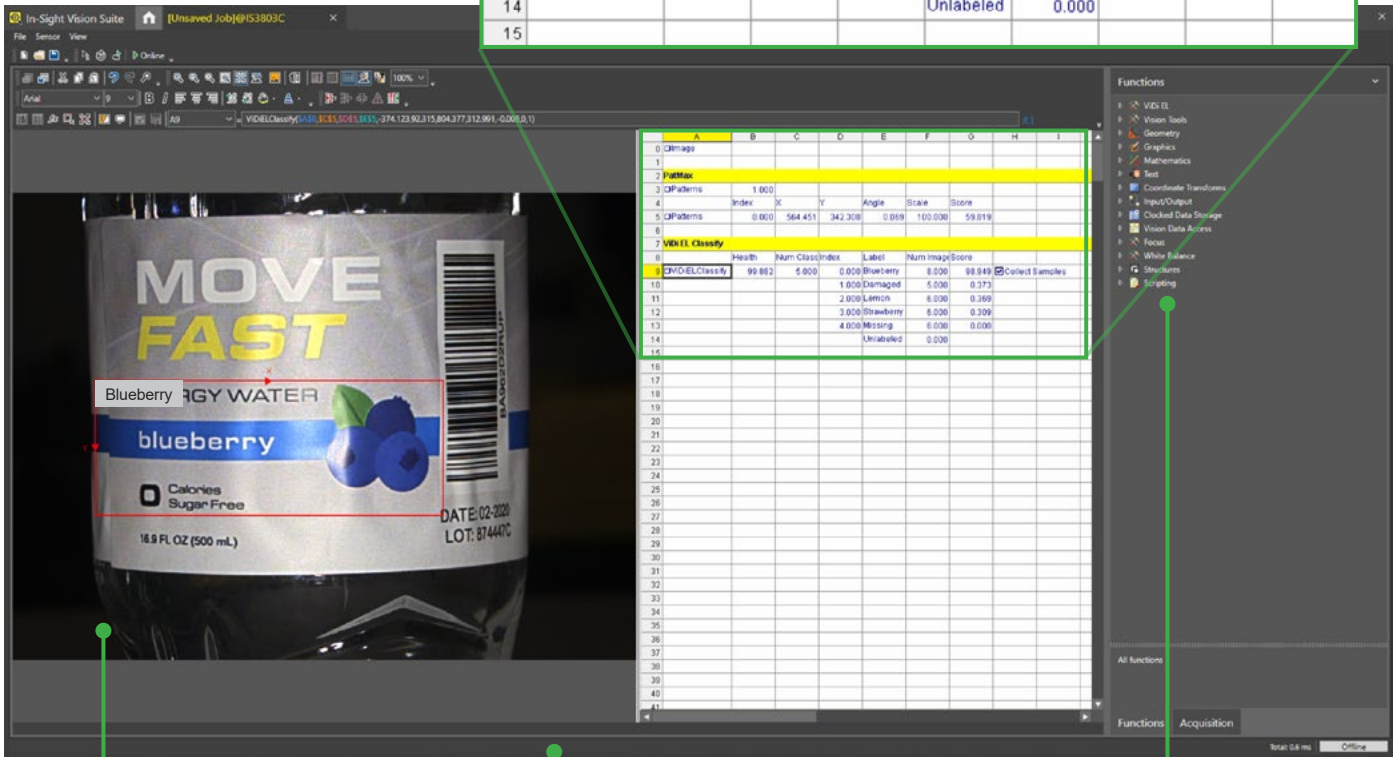
In-Sight Vision Suite software is common across all In-Sight products and includes two programming environments — spreadsheet and EasyBuilder — which allows you to seamlessly scale your solution as your business needs evolve.

Spreadsheet guides users through advanced applications

The In-Sight spreadsheet interface allows you to quickly set up and run jobs without the need for programming. This robust development environment provides you with the flexibility to make critical adjustments to job parameters, so you can adapt your applications as your requirements change.

Powerful **spreadsheet** interface allows users to solve complex applications

	A	B	C	D	E	F	G	H	I
0	Image								
1									
2	PatMax								
3	Patterns	1.000							
4		Index	X	Y	Angle	Scale	Score		
5	Patterns	0.000	564.451	342.308	0.069	100.000	59.819		
6									
7	VIDI EL Classify								
8		Health	Num Class	Index	Label	Num Image	Score		
9	VIDIELClassify	99.882	5.000	0.000	Blueberry	8.000	98.949	<input checked="" type="checkbox"/>	Collect Samples
10				1.000	Damaged	5.000	0.373		
11				2.000	Lemon	6.000	0.369		
12				3.000	Strawberry	6.000	0.309		
13				4.000	Missing	6.000	0.000		
14					Unlabeled	0.000			
15									



Easily review and recall files with image playback

Full I/O and communications function set streamlines factory integration

Full suite of AI- and rule-based vision tools

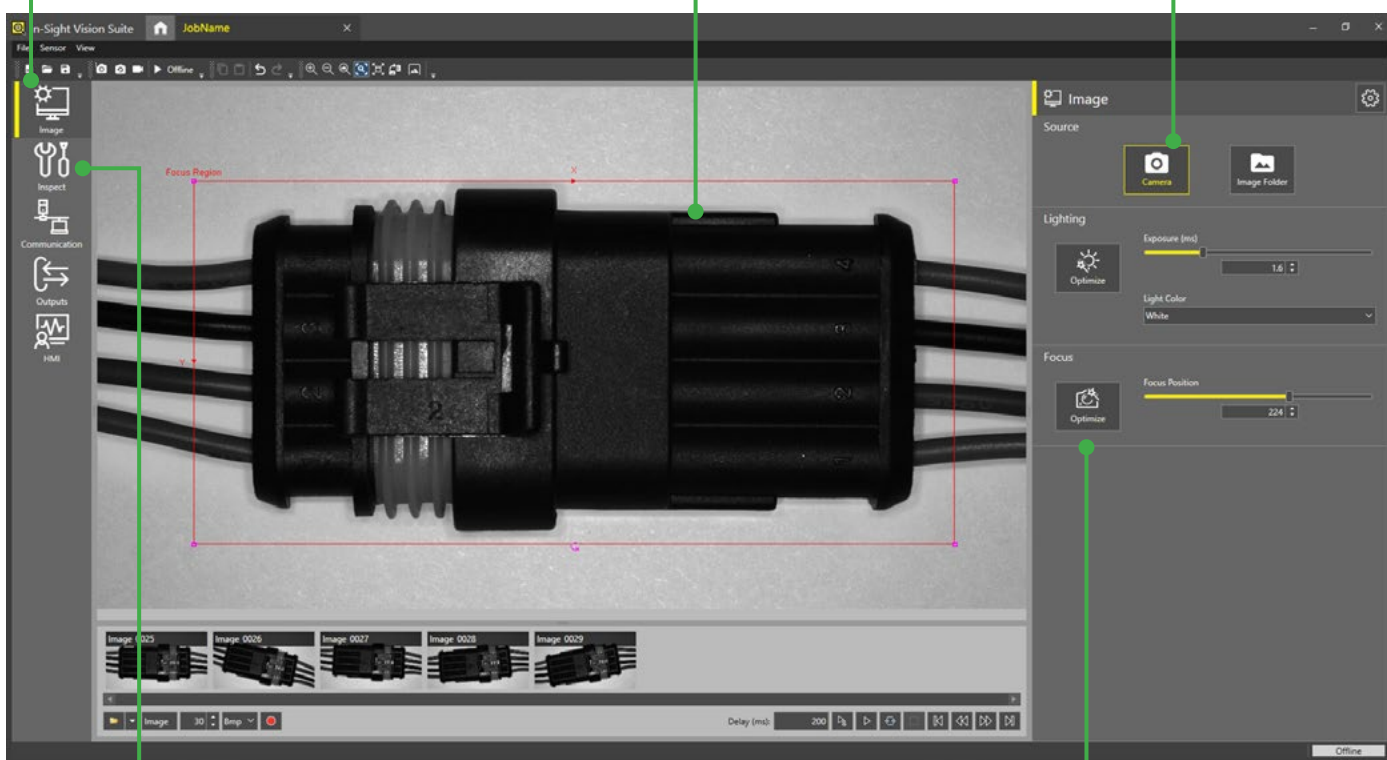
EasyBuilder development environment simplifies setup and delivers rapid turnaround

With its point-and-click programming, the EasyBuilder interface within In-Sight Vision Suite is ideal for developing simple or common jobs. The intuitive process guides developers step-by-step through setup — from image capture to the final result and beyond — allowing both new and experienced users to configure vision applications.

Easy **step-by-step** application setup

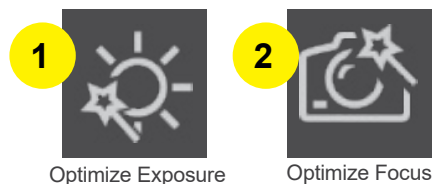
Image-centric **point-and-click** functionality allows users to quickly set up tools

Capture images live or upload existing libraries



Comprehensive set of traditional rule-based vision tools and innovative edge learning tools

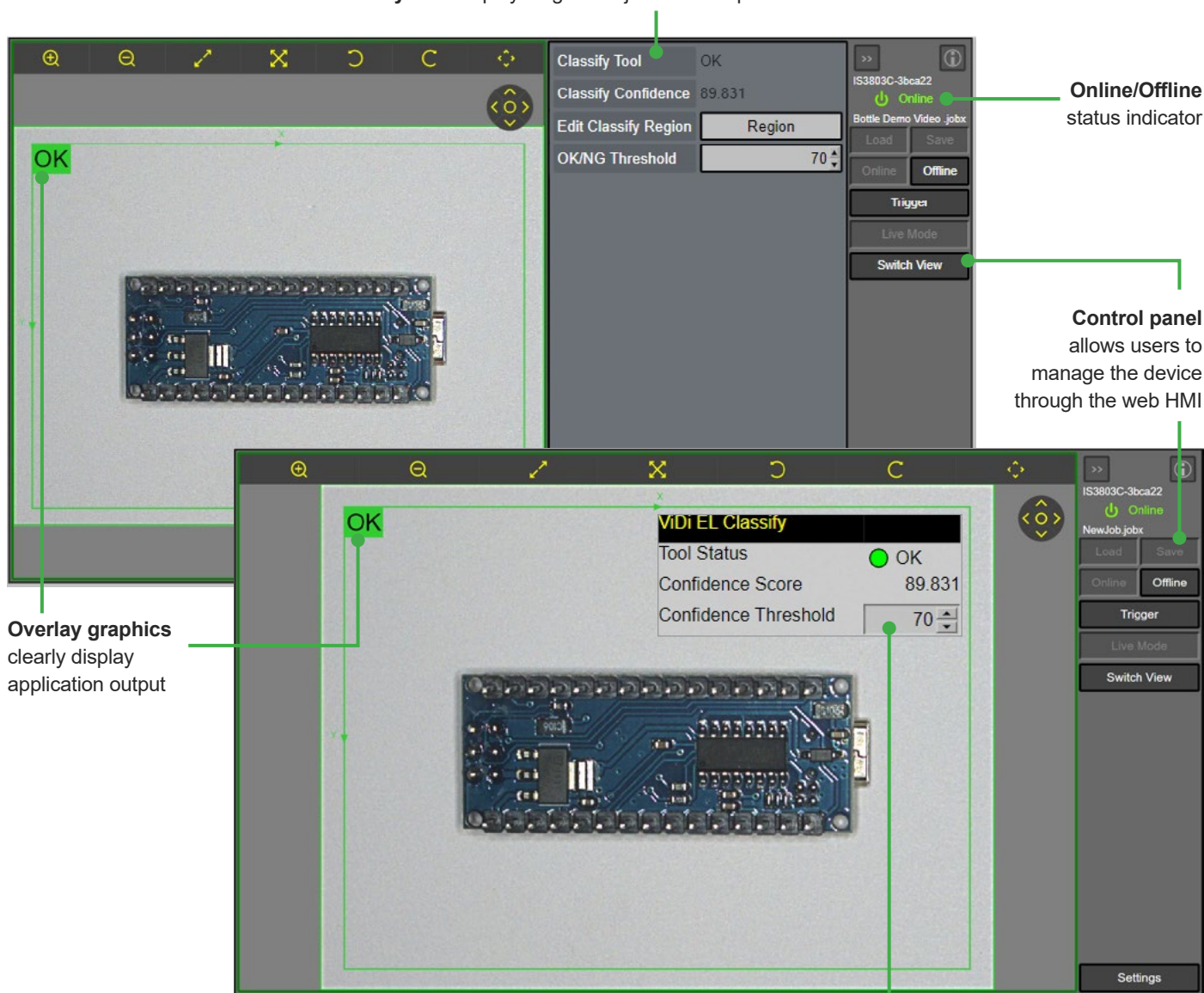
Fast, **2-click** image formation



Web-based HMI offers real-time application testing and optimization

The In-Sight 3800 provides access to a web-based human-machine interface (HMI) that enables runtime visualization. From the HMI, users can view inspection results and modify setup parameters to optimize their application.

EasyView displays tags from jobs in a simplified format



Online/Offline status indicator

Control panel allows users to manage the device through the web HMI

Overlay graphics clearly display application output

CustomView shows advanced settings from the spreadsheet

Set up applications, directly on the factory floor, with VisionView Web

VisionView Web is a display panel that allows you to quickly train, update, and monitor jobs on the production line, without the need for a PC. Having this technology on the factory floor improves efficiency, facilitates easy device management, and provides real-time feedback for immediate process improvements.

www.cognex.com/VisionView



Full-featured vision system solves wide range of applications

The In-Sight 3800 is engineered with the entire suite of innovative Cognex vision tools and convenient features that deliver fast, reliable automation.



Multi-color lighting for flexibility

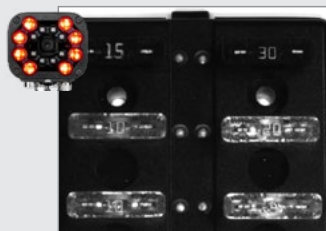
Multi-color (RGBW and IR) lighting options allow you to optimize image contrast, regardless of operating conditions. Simply click a button to change the light color and generate high-resolution images for more accurate inspections.

Powerful lighting for long-range applications

Advanced illumination strengthens intensity to create high-quality images. Available in red and white options, this lighting maximizes coverage and minimizes exposure times for greater throughput.



Actual part



Red light:
Numbers are unclear



Blue light:
Numbers are clear

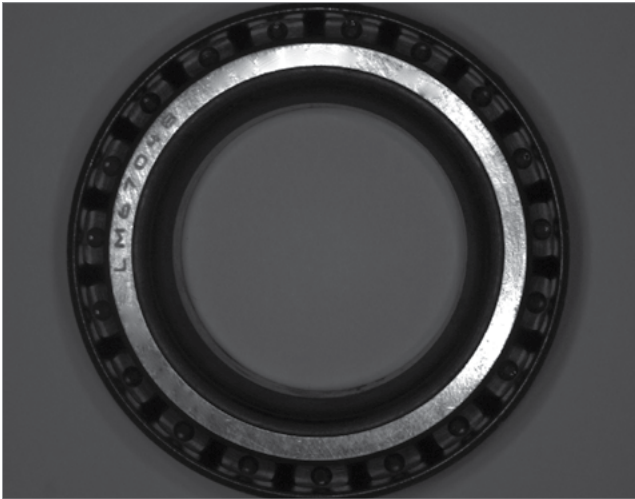


Innovative technology pushes the boundaries of HDR

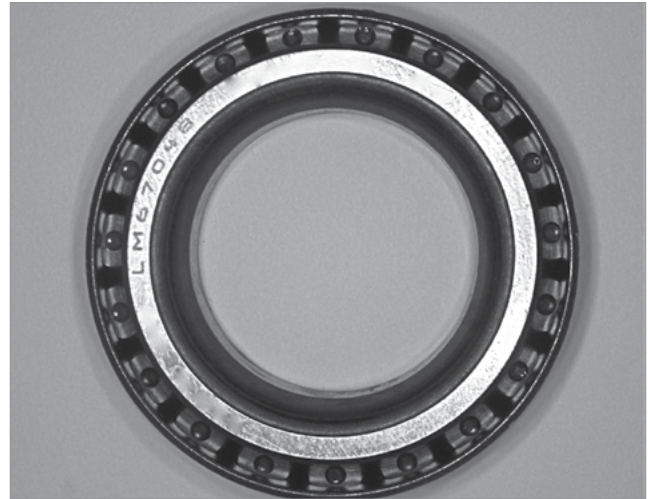
HDR+ enhances the capabilities of HDR technology by optimizing contrast automatically. This creates a more uniformed, more detailed image in a single acquisition. Available in both monochrome and color options, HDR+ delivers higher contrast and image quality that allow you to:

- See features that were not visible before
- Reduce light intensity
- Increase depth of field

Part inspection and OCR



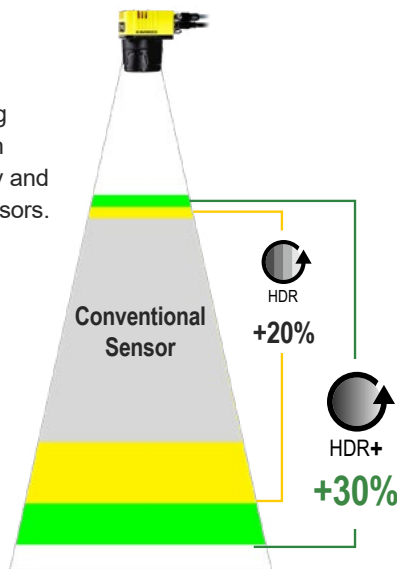
Without HDR: Embedded parts are unclear.



With HDR+: Serial code and bearings are both visible.

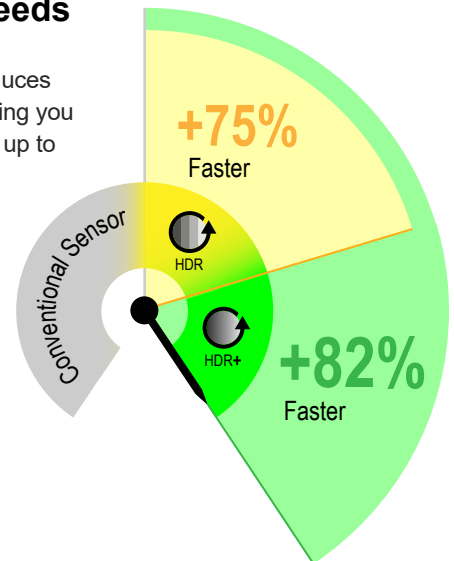
Greater depth-of-field

HDR+ reduces over- and under-exposure, providing greater depth-of-field than standard HDR technology and conventional imaging sensors.



Faster line speeds

HDR+ significantly reduces exposure times, enabling you to accommodate lines up to 80% faster.



Scalable architecture for current and future needs

The In-Sight 3800 series offers a variety of accessories and modular components. This flexibility enables users to adapt to keep up with changing demands, such as new changes, faster line speeds, and higher quality standards.



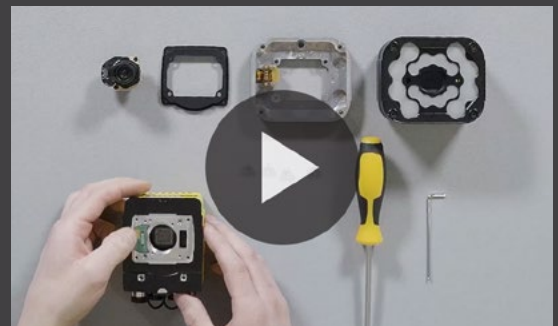
For additional details on accessory compatibility, please refer to page 19.

Need help configuring your system?

Watch this explainer video that walks you step-by-step through the build-up process.



www.cognex.com/in-sight-3800-buildup



In-Sight 3800 Series Specifications

Image Sensor	IS3801M	IS3801C	IS3803M	IS3803C	IS3805M	IS3805C
Bit Depth	8-bit monochrome	24-bit color	8-bit monochrome	24-bit color	8-bit monochrome	24-bit color
Frames per Second (Maximum, Full Resolution)	125 fps	52 fps	47 fps	30 fps	32 fps	21 fps
Sensor Type	1/2.3" CMOS, global shutter		1/1.8" CMOS, global shutter		2/3" CMOS, global shutter	
Sensor Properties	6.3 mm diagonal, 3.45 x 3.45 μ m square pixels		11.1 mm diagonal, 3.45 x 3.45 μ m square pixels		11.1 mm diagonal, 3.45 x 3.45 μ m square pixels	
Maximum Image Resolution (pixels)	1440 x 1080		2048 x 1536		2448 x 2048	
Electronic Shutter Speed	19.5 μ s to 200,000 μ s		25.1 μ s to 200,000 μ s		19.1 μ s to 200,000 μ s	

Image Sensor	IS3808M	IS3808C	IS3812M	IS3812C	IS3816M	IS3816C
Bit Depth	8-bit monochrome	24-bit color	8-bit monochrome	24-bit color	8-bit monochrome	24-bit color
Frames per Second (Maximum, Full Resolution)	24 fps	12 fps	22 fps	11 fps	18 fps	8 fps
Sensor Type	2/3" CMOS, global shutter		1/1.1" CMOS, global shutter		1.1" CMOS, global shutter	
Sensor Properties	11.1 mm diagonal, 2.74 x 2.74 μ m square pixels		14.0 mm diagonal, 2.74 x 2.74 μ m square pixels		16.8 mm diagonal, 2.74 x 2.74 μ m square pixels	
Maximum Image Resolution (pixels)	2840 x 2840		4096 x 3000		5320 x 3032	
Electronic Shutter Speed	22 μ s to 200,000 μ s		22 μ s to 200,000 μ s		29.1 μ s to 200,000 μ s	

Vision System	
Memory	4 GB
Lens Type	C-Mount, Cognex High Speed Liquid Lens Autofocus, or Cognex manual focus lens (used with Multi-Torch Illumination accessory).
Trigger	1 opto-isolated, acquisition trigger input.
Discrete Inputs	1 opto-isolated, acquisition trigger input. Up to 3 general-purpose inputs when connected to the Breakout cable.
Discrete Outputs	Up to 4 high-speed outputs when connected to the Breakout cable.
Status LEDs	Pass/Fail LED and Indicator Ring, Network LED and Error LED.
High Speed Liquid Lens Lifespan	Number of Focus Cycles: 1800 M cycles
Job/Program Memory	7.2 GB non-volatile flash memory; unlimited storage via remote network device.
Image Processing Memory	512 MB SDRAM
Network Communication	2 Ethernet ports, 10/100/1000 BaseT with auto MDIX. IEEE 802.3 TCP/IP Protocol. 1 USB-C port (supports direct connection to In-Sight Vision Suite on a PC, no factory floor protocols supported). Supports DHCP, static, and link-local IP address configuration.
Communication Protocols	TCP/IP, PROFINET, EtherNet/IP, SLMP, ModbusTCP, (S)FTP, RS-232C
Power Consumption	24 V DC \pm 10%, 2.0 A maximum.
Power Output	24 V DC at 1.0 A maximum to external light.
Material	Die-cast aluminum and zinc housing.
Finish	Painted.
Mounting	Four M3 threaded mounting holes. See Accessories for supported mounts. Pattern: 38.5 x 58.5 mm (1.52 x 2.60 in)
Weight	In-Sight 3800 with no accessories attached: 570 g (20.10 oz). With 45 mm plastic C-Mount cover (COV-380-CMNT-45): 625 g (22.0 oz.) - no lens included. With 60 mm plastic C-Mount cover (COV-380-CMNT-60): 635 g (22.4 oz.) - no lens included. With 75 mm plastic C-Mount cover (COV-380-CMNT-75): 650 g (22.9 oz.) - no lens included. With Multi-Torch Illumination, High Speed Liquid Lens (16 mm), and standard front cover: 840 g (29.6 oz.). With Multi-Torch Illumination, High Speed Liquid Lens (16 mm), and dome attachment: 970 g (34.2 oz.). With Red Torch-HR Illumination, High Speed Liquid Lens (25mm): 2935 g (103.5 oz.). With White Torch-HR Illumination, High Speed Liquid Lens (25mm): 2980 g (105.1 oz.).
Ambient/Environment Temperature	0° C to 40° C (32° F to 104° F)
Storage Temperature	-20° C to 80° C (-4° F to 176° F)
Humidity	<95% non-condensing
Protection	IP67 with all cables properly attached (or the provided connector plug installed), the IP67-rated cover, or Multi Torch attachment properly installed.
Shock (Packaging)	IEC 60068-2-27: 18 shocks (3 shocks in each polarity in each (X, Y, Z) axis) 80 Gs (800 m/s ² at 11 ms, half-sinusoidal) with cables or cable plugs and a 150 gram or lighter lens attached.
Vibration (Shipping and Storage)	IEC 60068-2-6: vibration test in each of the three main axis for 2 hours at 10 Gs (10 to 500 Hz at 100 m/s ² / 15 mm) with cables or cable plugs and a 150 gram or lighter lens attached.
Regulations/Conformity	CE, FCC, KCC, TÜV SÜD NRTL, EU RoHS, China RoHS

Field of view diagrams*

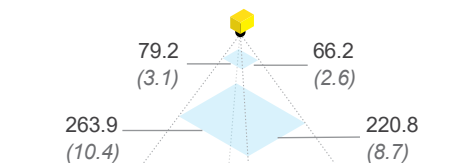
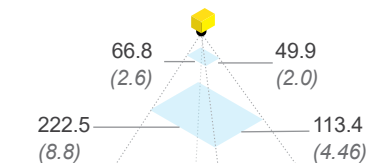
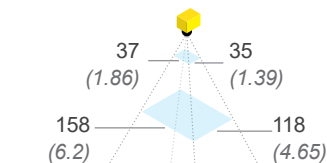
Working distances
Units: mm (in)

**1.6 MP with
16 mm lens**

**3 MP with
16 mm lens**

**5 MP with
16 mm lens**

Minimum
150 (5.9)



Midpoint
500 (19.7)

Maximum
2000 (78.7)

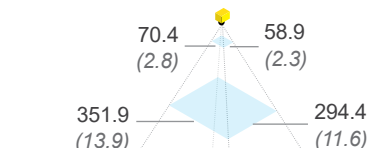
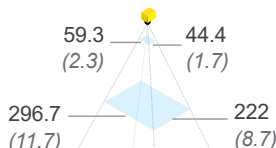
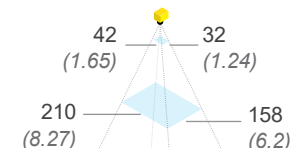
Working distances
Units: mm (in)

**1.6 MP with
24 mm lens**

**3 MP with
24 mm lens**

**5 MP with
24 mm lens**

Minimum
200 (7.9)



Midpoint
1000 (39.4)

Maximum
4000 (157.5)

*Field of view diagrams are based on the minimum and maximum focus distances of the High Speed Liquid Lens. If using a High Speed Liquid Lens with the Multi Torch light accessory, the system will perform best at distances between 150–500 mm (5.9–19.7 in) in terms of light intensity/uniformity.



Find the right lens for your application

The Cognex lens advisor makes it easy to select the right lens for your application. Plug in your specifications, hit "Calculate," and let the advisor take care of the rest.

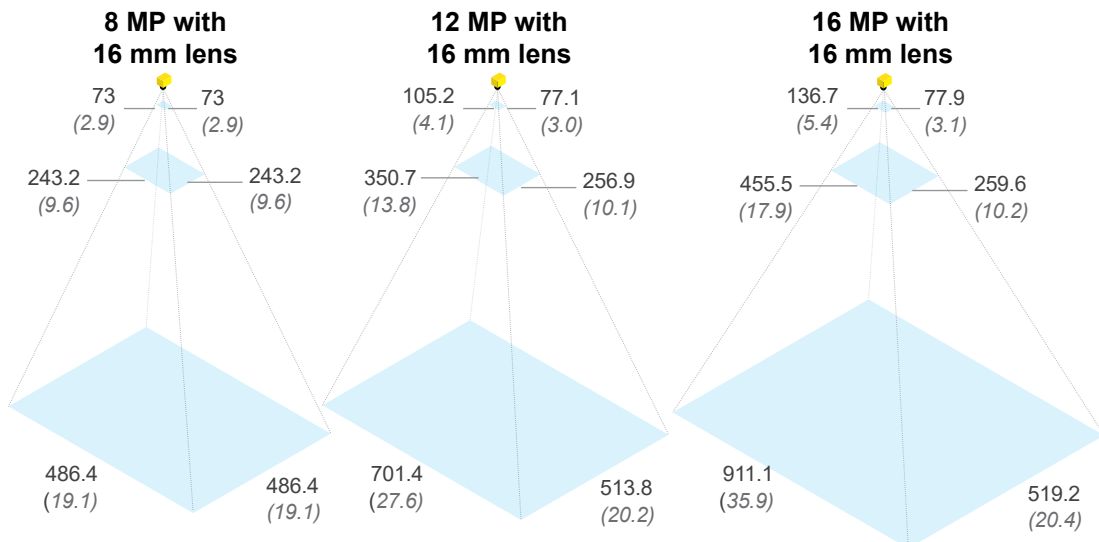
cognex.com/lens-advisor

Working distances
Units: mm (in)

Minimum
150 (5.9)

Midpoint
500 (19.7)

Maximum
1000 (39.4)

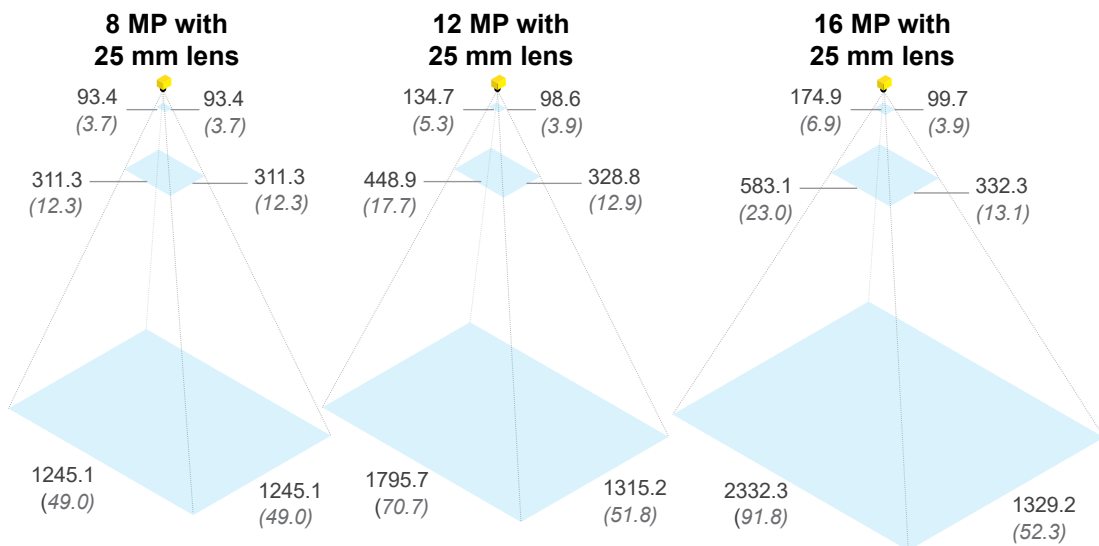


Working distances
Units: mm (in)

Minimum
300 (11.8)

Midpoint
1000 (39.4)

Maximum
4000 (157.5)

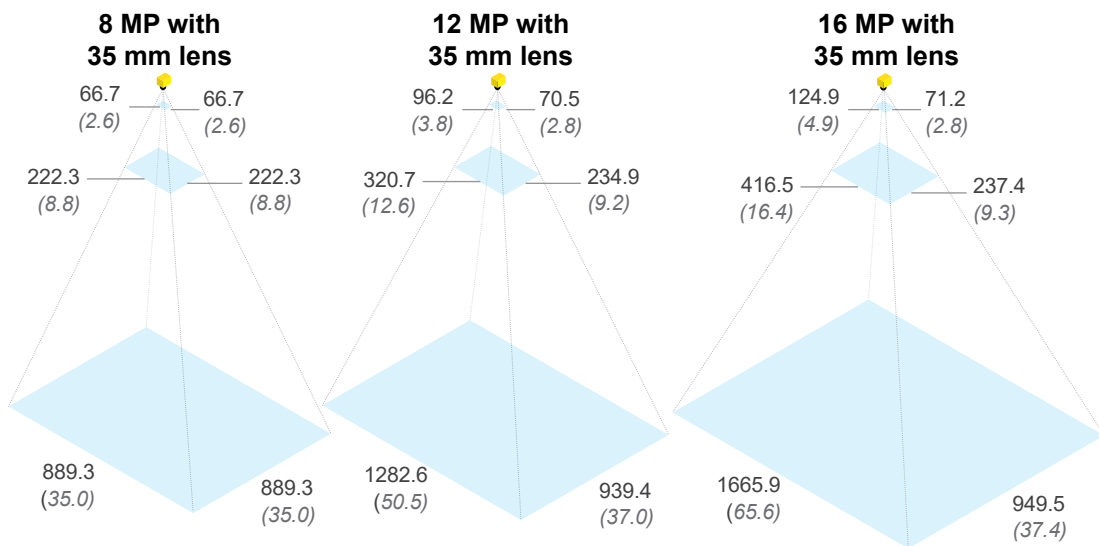


Working distances
Units: mm (in)

Minimum
300 (11.8)











Midpoint
1000 (39.4)

Maximum
4000 (157.5)



*Field of view diagrams are based on the minimum and maximum focus distances of the High Speed Liquid Lens. If using a High Speed Liquid Lens with the Multi Torch light accessory, the system will perform best at distances between 150–500 mm (5.9–19.7 in) in terms of light intensity/uniformity.




Product IDs and descriptions*

In-Sight 3800 Series								
	Product ID	Resolution	Mono/Color	Performance	Light	Lens	Cover	Toolset
	IS3801MP-00001-SA	1.6 MP	Mono	Performance	None	None	None	EB/SS ¹ , all tools
	IS3801CP-00001-SA	1.6 MP	Color	Performance	None	None	None	EB/SS, all tools
	IS3801MS-00001-SA	1.6 MP	Mono	Standard	None	None	None	EB/SS, all tools
	IS3801CS-00001-SA	1.6 MP	Color	Standard	None	None	None	EB/SS, all tools
	IS3801MP-14621-SA	1.6 MP	Mono	Performance	Multi Torch	16 mm HSSL	Diffused	EB/SS, all tools
	IS3801CP-14621-SA	1.6 MP	Color	Performance	Multi Torch	16 mm HSSL	Diffused	EB/SS, all tools
	IS3801MP-14821-SA	1.6 MP	Mono	Performance	Multi Torch	24 mm HSSL	Diffused	EB/SS, all tools
	IS3801CP-14821-SA	1.6 MP	Color	Performance	Multi Torch	24 mm HSSL	Diffused	EB/SS, all tools
	IS3803MP-00001-SA	3.2 MP	Mono	Performance	None	None	None	EB/SS, all tools
	IS3803CP-00001-SA	3.2 MP	Color	Performance	None	None	None	EB/SS, all tools
	IS3803MS-00001-SA	3.2 MP	Mono	Standard	None	None	None	EB/SS, all tools
	IS3803CS-00001-SA	3.2 MP	Color	Standard	None	None	None	EB/SS, all tools
	IS3803MP-14621-SA	3.2 MP	Mono	Performance	Multi Torch	16 mm HSSL	Diffused	EB/SS, all tools
	IS3803CP-14621-SA	3.2 MP	Color	Performance	Multi Torch	16 mm HSSL	Diffused	EB/SS, all tools
	IS3803MP-14821-SA	3.2 MP	Mono	Performance	Multi Torch	24 mm HSSL	Diffused	EB/SS, all tools
	IS3803CP-14821-SA	3.2 MP	Color	Performance	Multi Torch	24 mm HSSL	Diffused	EB/SS, all tools
	IS3805MP-00001-SA	5 MP	Mono	Performance	None	None	None	EB/SS, all tools
	IS3805CP-00001-SA	5 MP	Color	Performance	None	None	None	EB/SS, all tools
	IS3805MS-00001-SA	5 MP	Mono	Standard	None	None	None	EB/SS, all tools
	IS3805CS-00001-SA	5 MP	Color	Standard	None	None	None	EB/SS, all tools
	IS3805MP-14621-SA	5 MP	Mono	Performance	Multi Torch	16 mm HSSL	Diffused	EB/SS, all tools
	IS3805CP-14621-SA	5 MP	Color	Performance	Multi Torch	16 mm HSSL	Diffused	EB/SS, all tools
	IS3805MP-14821-SA	5 MP	Mono	Performance	Multi Torch	24 mm HSSL	Diffused	EB/SS, all tools
	IS3805CP-14821-SA	5 MP	Color	Performance	Multi Torch	24 mm HSSL	Diffused	EB/SS, all tools
	IS3808MX-00001-SA	8 MP	Mono	Max	None	None	None	EB/SS, all tools
	IS3808CX-00001-SA	8 MP	Color	Max	None	None	None	EB/SS, all tools
	IS3808MS-00001-SA	8 MP	Mono	Standard	None	None	None	EB/SS, all tools
	IS3808CS-00001-SA	8 MP	Color	Standard	None	None	None	EB/SS, all tools
	IS3812MX-00001-SA	12 MP	Mono	Max	None	None	None	EB/SS, all tools
	IS3812CX-00001-SA	12 MP	Color	Max	None	None	None	EB/SS, all tools
	IS3812MS-00001-SA	12 MP	Mono	Standard	None	None	None	EB/SS, all tools
	IS3812CS-00001-SA	12 MP	Color	Standard	None	None	None	EB/SS, all tools
	IS3816MX-00001-SA	16 MP	Mono	Max	None	None	None	EB/SS, all tools
	IS3816CX-00001-SA	16 MP	Color	Max	None	None	None	EB/SS, all tools
	IS3816MS-00001-SA	16 MP	Mono	Standard	None	None	None	EB/SS, all tools
	IS3816CS-00001-SA	16 MP	Color	Standard	None	None	None	EB/SS, all tools
	IS3808MX-22321-SA	8 MP	Mono	Max	Red Torch-HR	25 mm HSSL - HR	Diffused	EB/SS, all tools
	IS3808CX-21321-SA	8 MP	Color	Max	White Torch-HR	25 mm HSSL - HR	Diffused	EB/SS, all tools
	IS3812MX-22321-SA	12 MP	Mono	Max	Red Torch-HR	25 mm HSSL - HR	Diffused	EB/SS, all tools
	IS3812CX-21321-SA	12 MP	Color	Max	White Torch-HR	25 mm HSSL - HR	Diffused	EB/SS, all tools
	IS3816MX-22021-SA	16 MP	Mono	Max	Red Torch-HR	None	Diffused	EB/SS, all tools
	IS3816CX-21021-SA	16 MP	Color	Max	White Torch-HR	None	Diffused	EB/SS, all tools








*This table includes only the most common product models. To get information on other available models, please contact Cognex Sales at cognex.com/contact-sales.

Components and accessories



Lights

	Product ID	Description
	380-TORCH-MULTI-AF ¹	Multi Torch Accessory Kit for autofocus lenses. Includes: Multi Torch illumination module, mount for illumination module (CLN-CXXFXX-HSLL High-Speed Liquid Lenses only), diffused cover, illumination PCB, 2 mm hex tool.
	380-TORCH-MULTI-MF ¹	Multi Torch Accessory Kit for manual focus lenses. Includes: Multi Torch illumination module, mount for illumination module (CLN-CXXFXX manual lenses only), diffused cover, illumination PCB, 2 mm hex tool.
	380-TORCH-RED-HR	Red Torch-HR Accessory kit for high-resolution models. Includes Red Torch-HR illumination module, diffused cover, illumination cable, 2mm hex tool.
	380-TORCH-WHITE-HR	White Torch-HR Accessory kit for high-resolution models. Includes White Torch-HR illumination module, diffused cover, illumination cable, 2mm hex tool.

Front Covers





	Product ID	Description
	380-TORCH-COVDIF ¹	Multi Torch diffused front cover
	380-TORCH-COVPOL ¹	Multi Torch cross-polarized front cover
	380-TORCH-COVCLR ¹	Multi Torch clear front cover
	380-TORCH-DOME ¹	Multi Torch dome attachment
	380-TORCH-HR-COVDF	Torch-HR diffused front cover
	380-TORCH-HR-COVPL	Torch-HR cross-polarized front cover
	380-TORCH-HR-COVCL	Torch-HR clear front cover

Bandpass Filters






	Product ID	Description
	380-TORCH-BP450 ¹	Blue bandpass filter for Multi Torch
	380-TORCH-BP635 ¹	Red bandpass filter for Multi Torch

- 1 Compatible with IS3801/3803/3805.
- 2 Compatible with IS3801.
- 3 Compatible with IS3808/3812.
- 4 Compatible with IS3808/3812/3816.





Mounting Brackets

	Product ID	Description
	BKT-INS-01	Mounting bracket with M3, M4 and 1/4 - 20 mounting holes
	ISB-7000-7K	Converter mounting bracket with M3 socket head screws/wrench
	ISB-7000-5K	Converter mounting bracket with Phillips flat head M3 screws and M4 screws
	DMBK-PVT-HPIT-380	U-shaped mounting bracket with M6 mounting holes for Torch-HR models







Lenses

	Product ID	Description
	CLN-C16F8FS-HSSL ¹	16 mm HSSL
	CLN-C24F6FS-HSSL ¹	24 mm HSSL
	CLN-C16F8FS ¹	16 mm manual focus lens
	CLN-C24F6FS ¹	24 mm manual focus lens
	CLN-C16F65-HSSL-HR ³	16 mm HSSL - high resolution
	CLN-C25F65-HSSL-HR ³	25 mm HSSL - high resolution
	CLN-C35F06-HSSL-HR ³	35 mm HSSL - high resolution
	LMC-ML-M0818HR ²	8 mm Moritex HR series lens
	LMC-ML-M1218HR ²	12 mm Moritex HR series lens
	LMC-ML-M1618HR ²	16 mm Moritex HR series lens
	LMC-ML-M2518HR ²	25 mm Moritex HR series lens
	LMC-ML-M3520HR ²	35 mm Moritex HR series lens
	LMC-ML-M5025HR ²	50 mm Moritex HR series lens
	LMC-ML-M0625UR ¹	6 mm Moritex UR series lens
	LMC-ML-M0822UR ¹	8 mm Moritex UR series lens
	LMC-ML-M1218UR ¹	12 mm Moritex UR series lens
	LMC-ML-M1616UR ¹	16 mm Moritex UR series lens
	LMC-ML-M2516UR ¹	25 mm Moritex UR series lens
	LMC-ML-M3520UR ¹	35 mm Moritex UR series lens
	LMC-ML-M5025UR ¹	50 mm Moritex UR series lens
	LMC-ML-U0618SR ⁴	6 mm Moritex SR series lens
	LMC-ML-U1217SR ⁴	12 mm Moritex SR series lens
	LMC-ML-U1615SR ⁴	16 mm Moritex SR series lens
	LMC-ML-U2515SR ⁴	25 mm Moritex SR series lens
	LMC-ML-U3518SR ⁴	35 mm Moritex SR series lens
	LMC-ML-U5022SR ⁴	50 mm Moritex SR series lens


Lens Covers

	Product ID	Description
	COV-380-CMNT-45	45 mm plastic lens cover
	COV-380-CMNT-60	60 mm plastic lens cover
	COV-380-CMNT-75	75 mm plastic lens cover
	COV-7000-CMNT-LGX	30 mm lens cover extender

Cables

	Product ID	Description
	IVSL-5PM12-JXXX	External light cable, yellow (300 mm, 500 mm, 1000 mm, 2000 mm)
	IVSL-M12-NSB-XXX	External light cable, black (300 mm, 1000 mm, 2000 mm)
	CCB-M12LTF-XX	External light cable, gray (0.5 m, 1 m, 2 m, 5 m)
	ICQ-CB-0.5-IFL-M12	Black M12 to M12 cable with a small in-line capacitor (2 m)
	CCB-84901-2001-XX	Ethernet cable, X-coded M12-8 to RJ-45 (2 m, 5 m, 10 m, 15 m, 30 m)
	CCB-84901-2RBT-XX	Ethernet cable, X-coded M12-8 to RJ-45 (2 m, 5 m, 10 m)
	CCB-PWRIO-XX	Breakout cable, M12-12 to flying lead (5 m, 10 m, 15 m)

VisionView Web

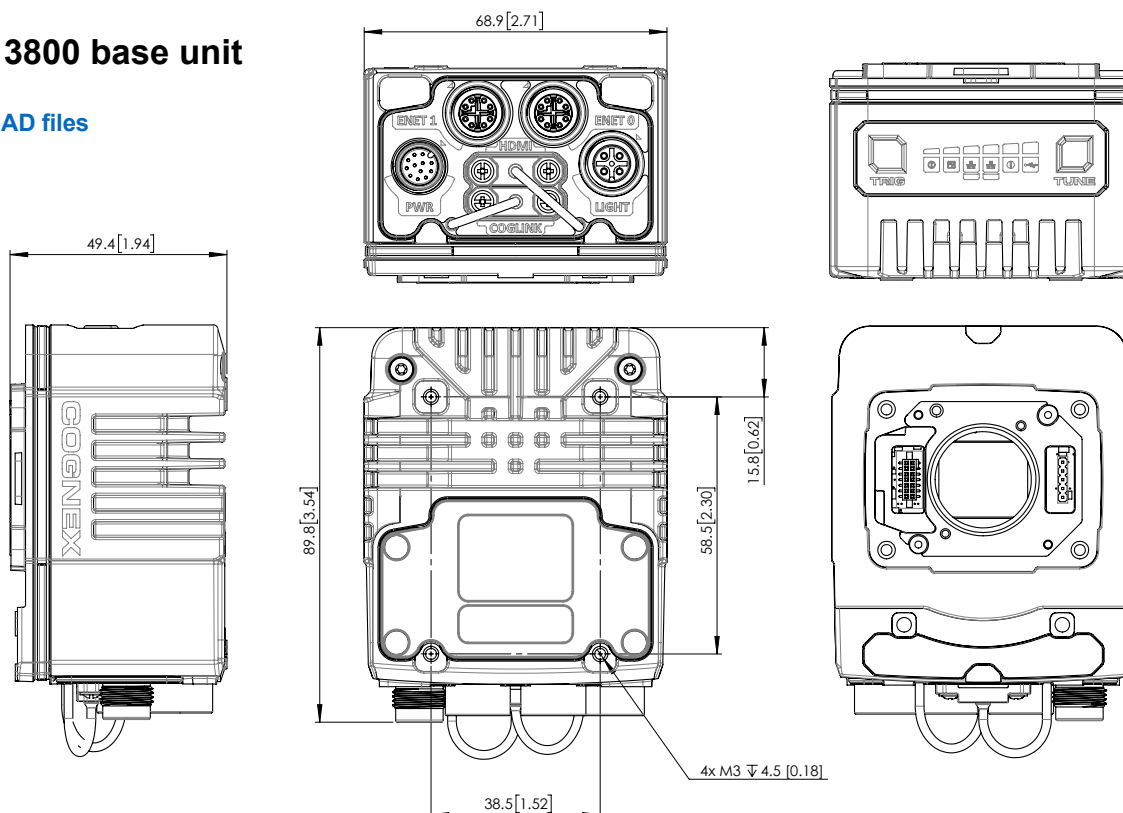
	Product ID	Description
	VVW-P	VV Web HDMI Panel
	VVW-H-AU	CFKIT, VV Web HDMI with AU PS
	VVW-H-EU	CFKIT, VV Web HDMI with EU PS
	VVW-H-NOM	CFKIT, VV Web HDMI with NOM PS
	VVW-H-UK	CFKIT, VV Web HDMI with UK PS
	VVW-H-US	CFKIT, VV Web HDMI with US PS

Dimensions

Units: mm, [in]

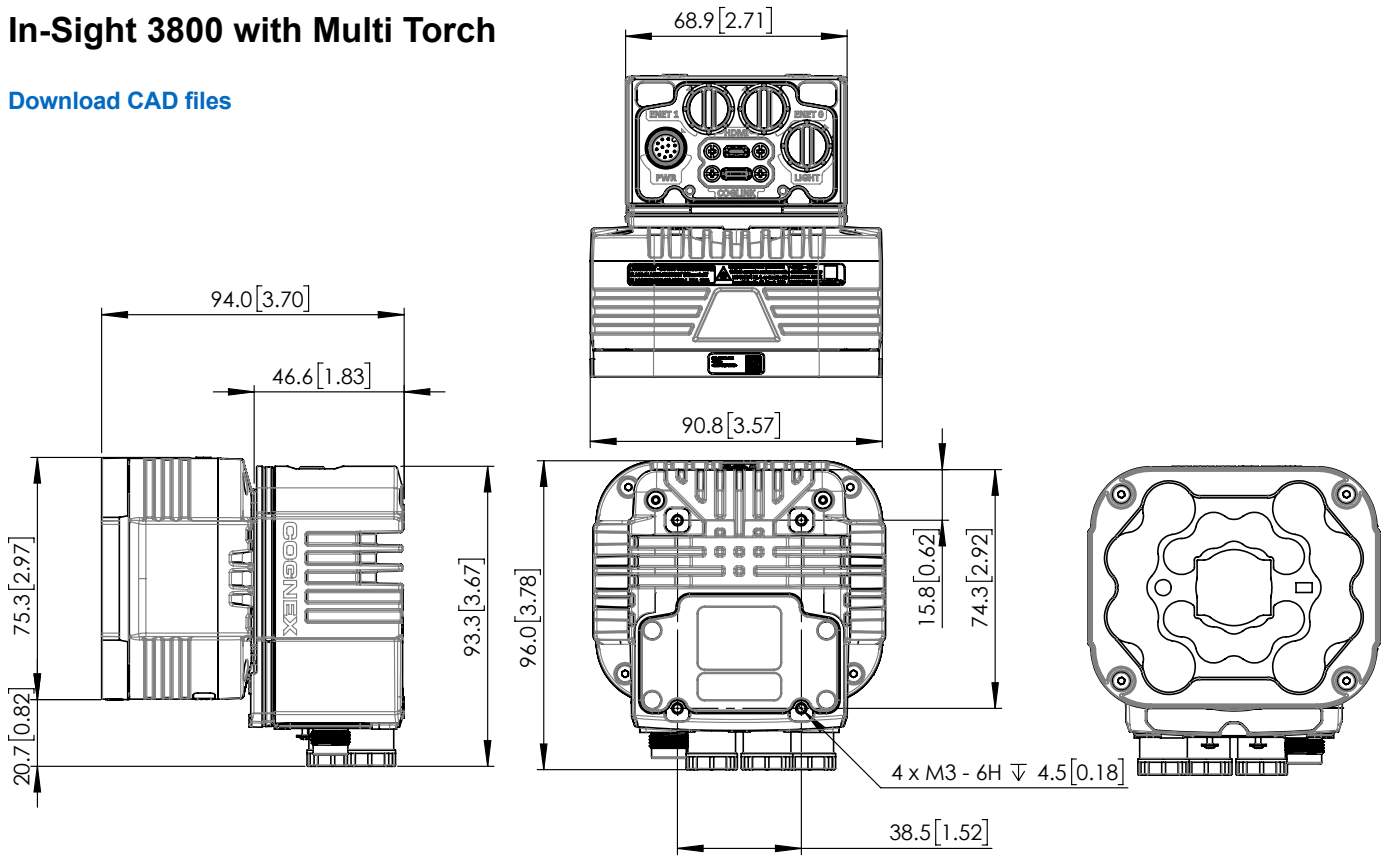
In-Sight 3800 base unit

[Download CAD files](#)



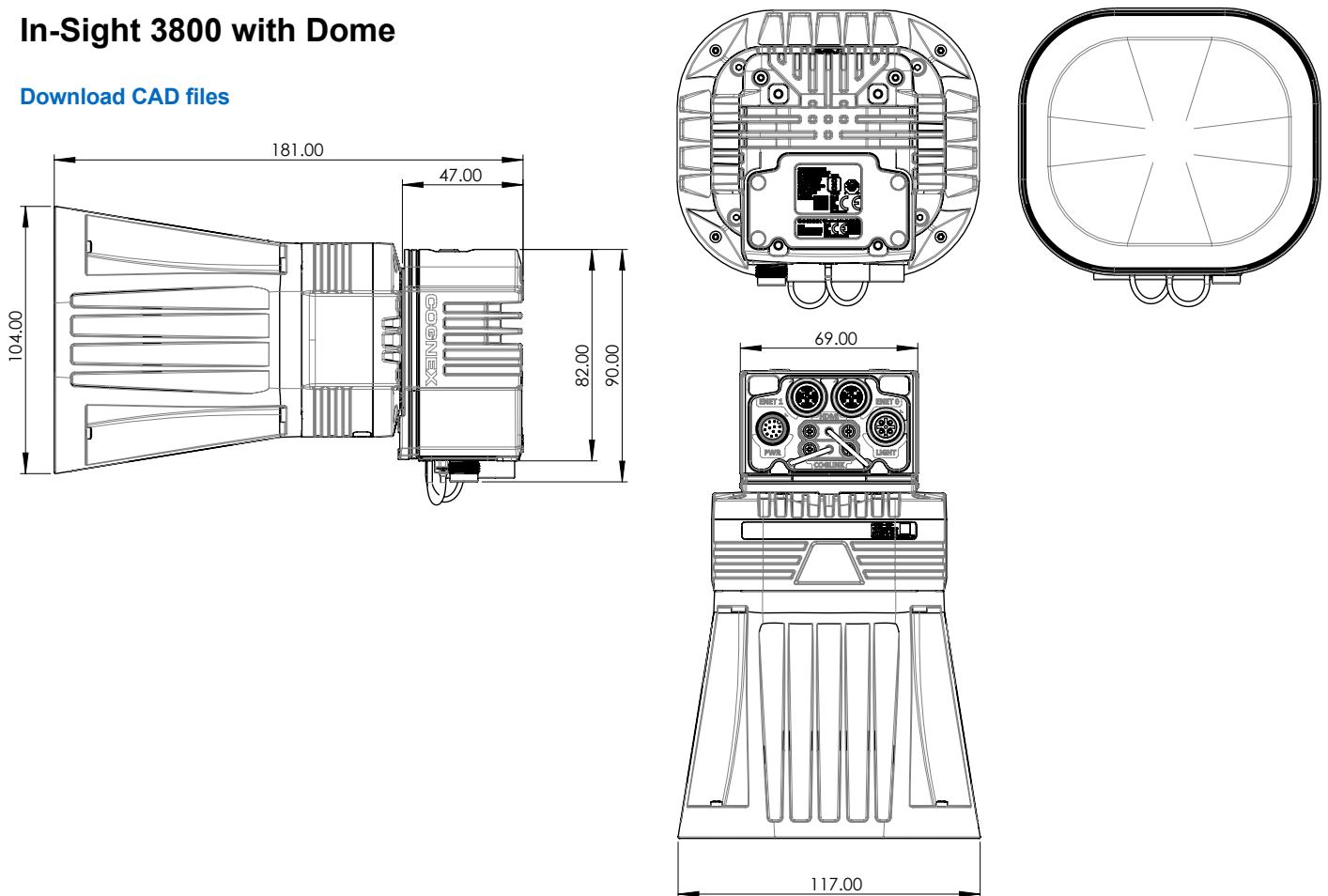
In-Sight 3800 with Multi Torch

[Download CAD files](#)



In-Sight 3800 with Dome

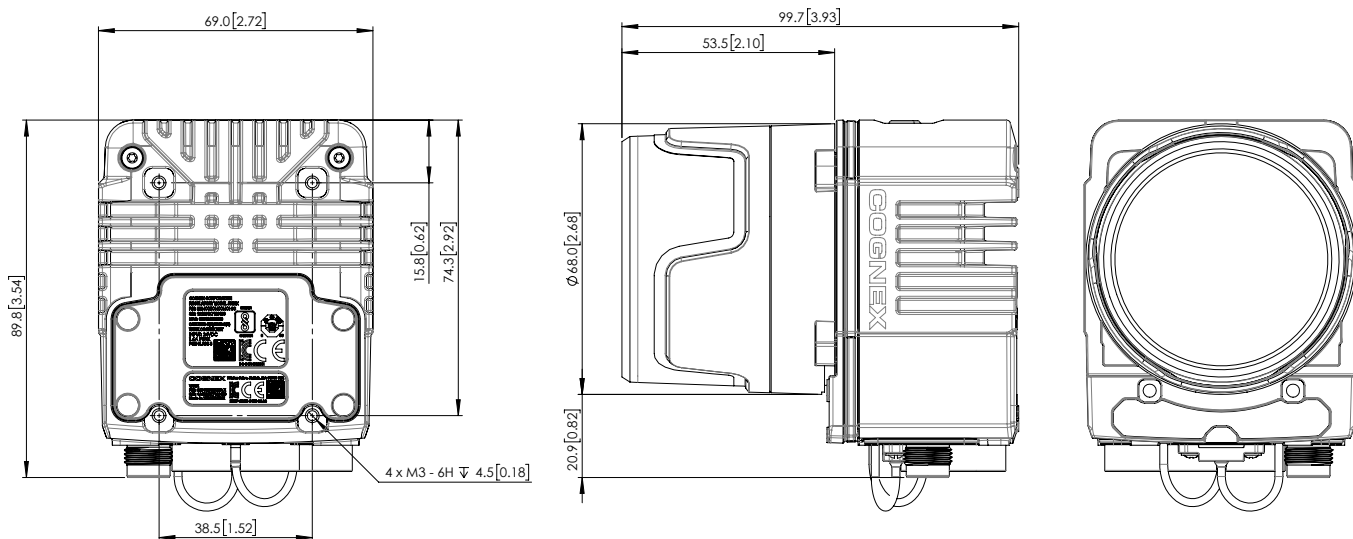
[Download CAD files](#)



In-Sight 3800 with C-mount

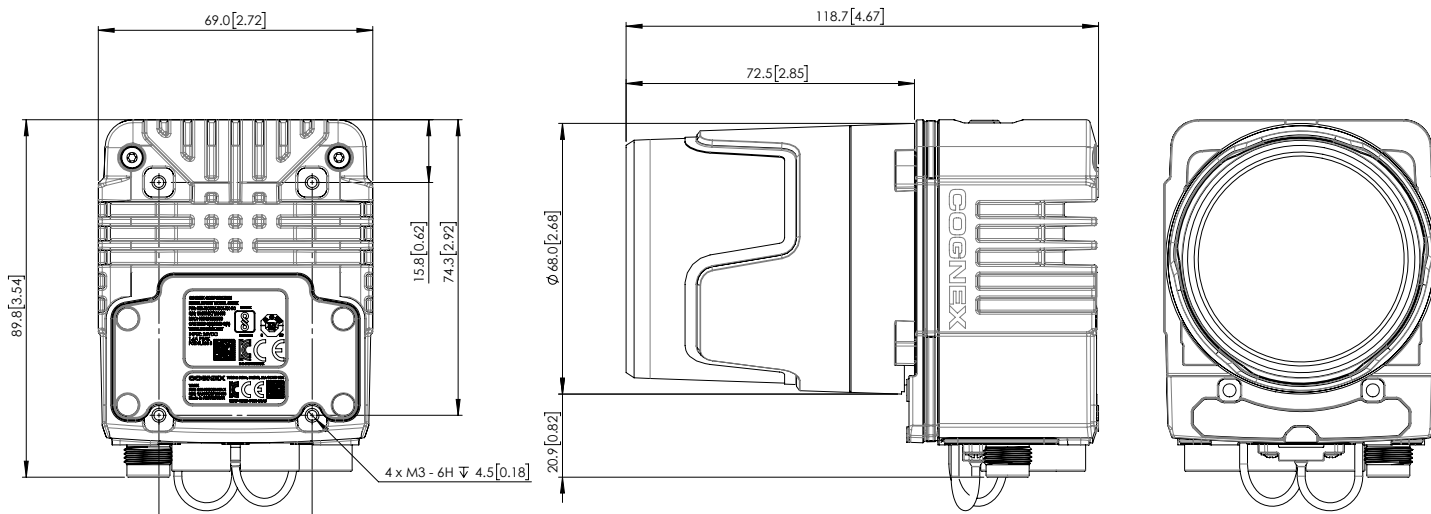
45 mm C-mount cover

[Download CAD files](#)



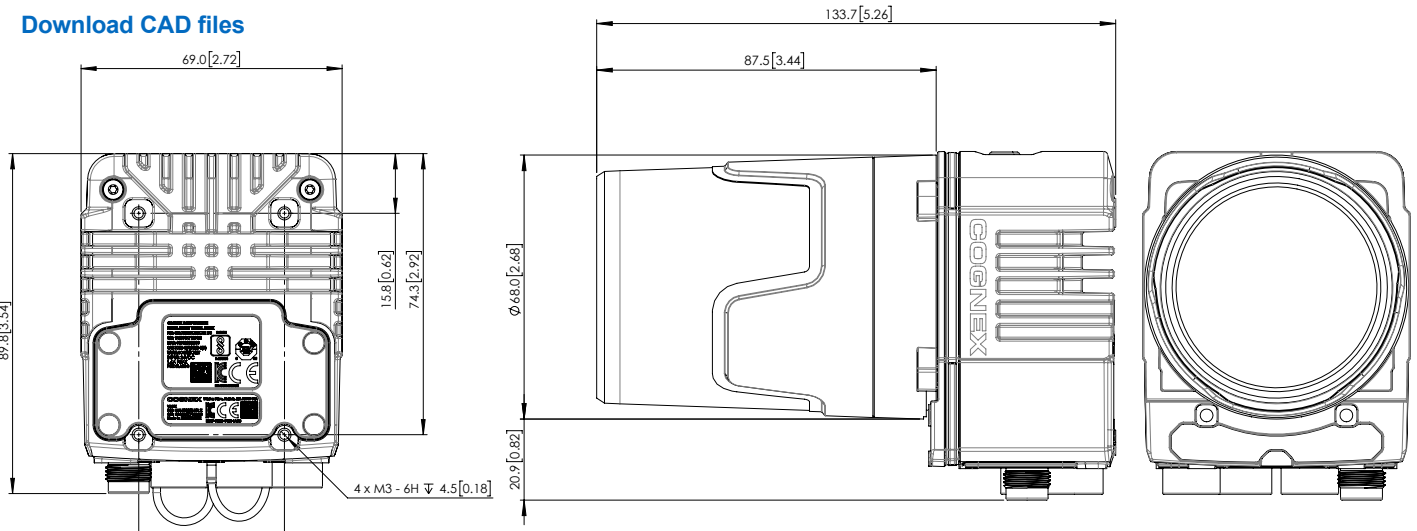
60 mm C-mount cover

[Download CAD files](#)



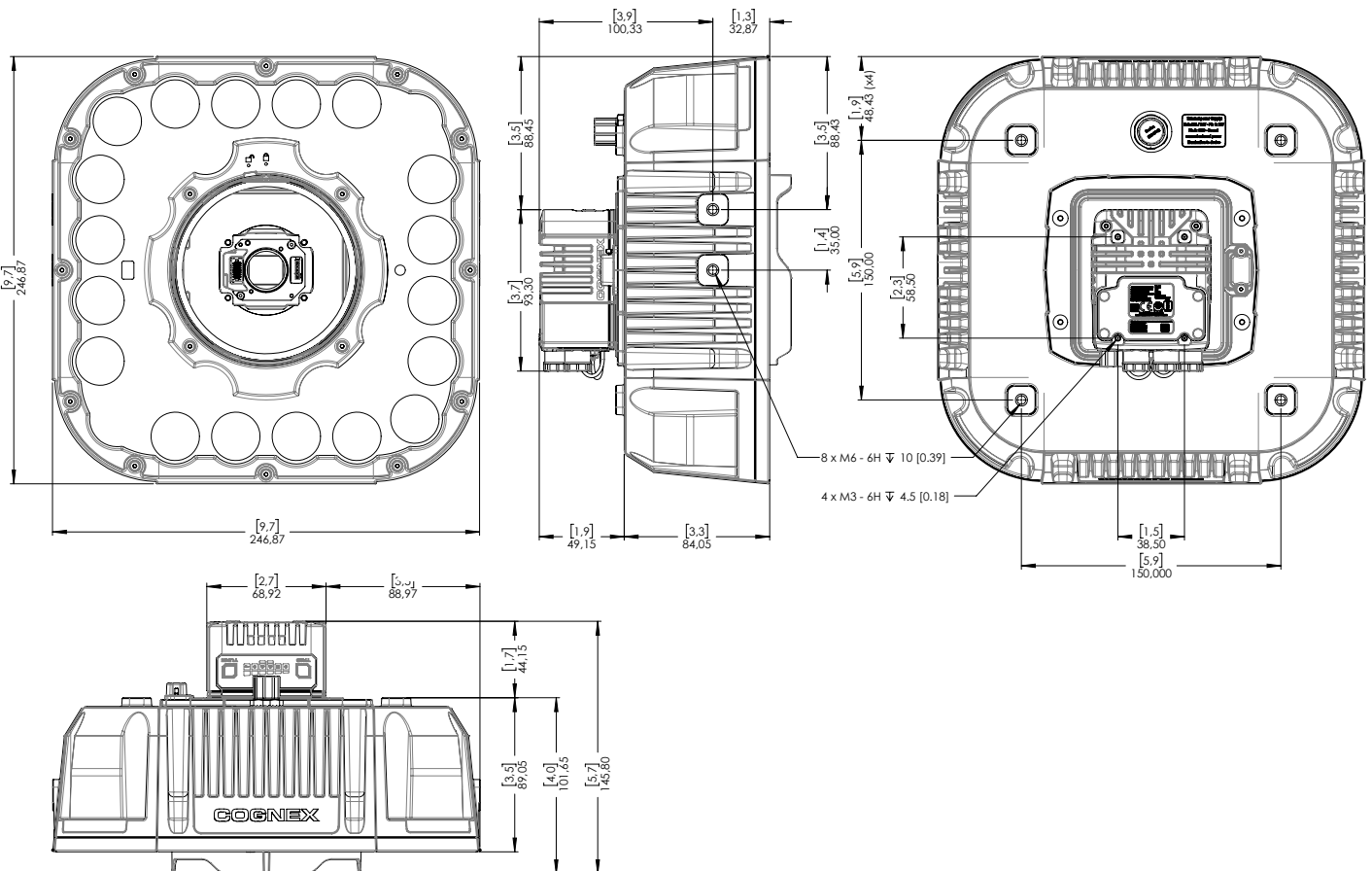
75 mm C-mount cover

[Download CAD files](#)

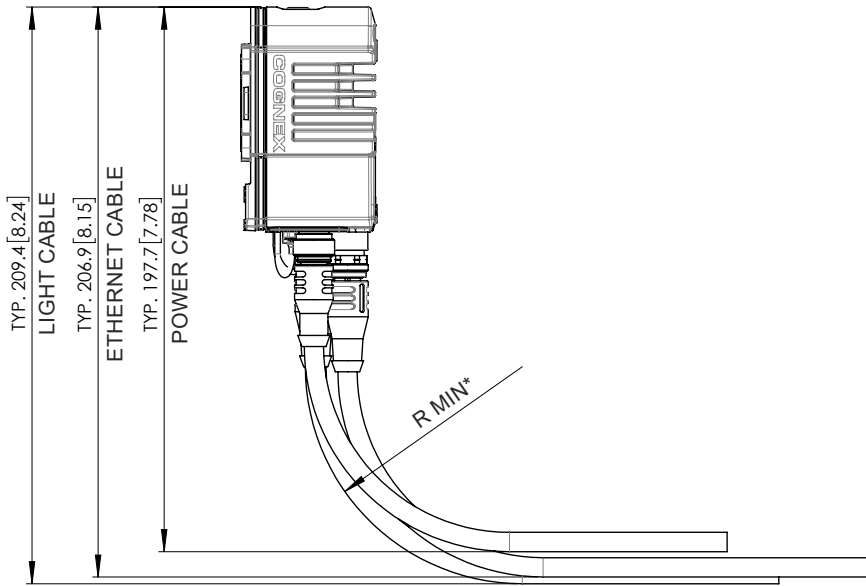


In-Sight 3800 with Torch-HR

[Download CAD files](#)

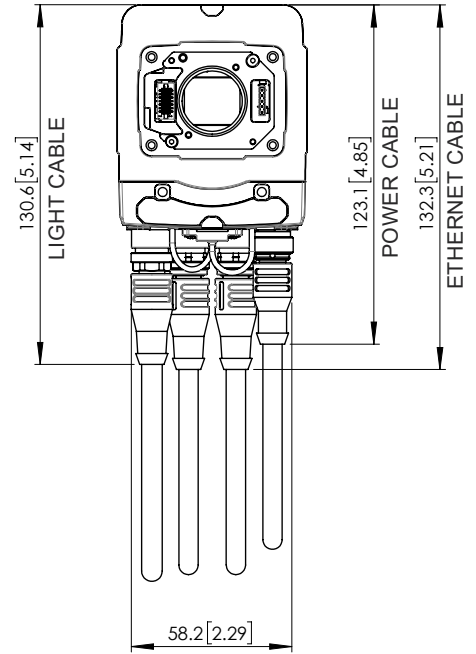


Cable bend radius



*R MIN = 10X CABLE DIAMETER

TYPICAL:
 POWER CABLE Ø7.1 [0.28]
 ETHERNET CABLE Ø7.1 [0.28]
 LIGHT CABLE Ø7.5 [0.3]



COGNEX

Companies around the world rely on Cognex vision and barcode reading solutions to optimize quality, drive down costs, and control traceability.

Corporate Headquarters One Vision Drive Natick, MA 01760 USA

Regional Sales Offices

Americas

North America +1 844 999 2469
 Brazil +55 11 4210 3919
 Mexico +800 733 4116

Europe

Austria +43 800 28 16 32
 Belgium +32 289 370 75
 Czechia +420 800 023 519
 France +33 1 76 54 93 18
 Germany +49 721 958 8052
 Hungary +36 800 80291

Ireland +353 21 421 7500
 Italy +39 02 3057 8196
 Netherlands +31 207 941 398
 Poland +48 717 121 086
 Romania +40 741 041 272
 Spain +34 93 299 28 14
 Sweden +46 21 14 55 88
 Switzerland +41 445 788 877
 Turkey +90 216 900 1696
 United Kingdom +44 121 29 65 163

Asia-Pacific

Australia +61 2 7202 6910
 China +86 21 5875 1133

India +91 7305 040397
 Indonesia +62 21 3076 1792
 Japan +81 3 5977 5400
 Korea +82 2 539 9047
 Malaysia +6019 916 5532
 New Zealand +64 9 802 0555
 Philippines +63 2 8539 3990
 Singapore +65 3158 3322
 Taiwan +886 02 7703 2848
 Thailand +66 6 3230 9998
 Vietnam +84 98 2405167

© Copyright 2024, Cognex Corporation. All information in this document is subject to change without notice. All Rights Reserved. Cognex, In-Sight, and EasyBuilder are registered trademarks of Cognex Corporation. ViDi is a trademark of Cognex Corporation. All other trademarks are property of their respective owners. Lit. No. IS3800DS-07-2024

www.cognex.com