

KPL200



LED frontlight for Cognex In-Sight Systems

Version 2.1

KPL200

Krempien+Petersen Qualitäts-Kontrollsysteme GmbH



Features

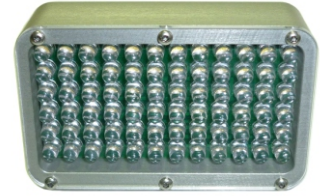
- High light intensity
- 72 high-power LEDs (12x6)
- Direct triggering by the camera
- Flashmode in overcurrent range
- Can be used up to a distance of 1.5 meters
- Flash duration between $16 \mu\text{s}^1$ and 10 ms
- Closed compact industrial housing
- Simple mounting on the rear panel
- Protection class IP65



¹ depends on camera model

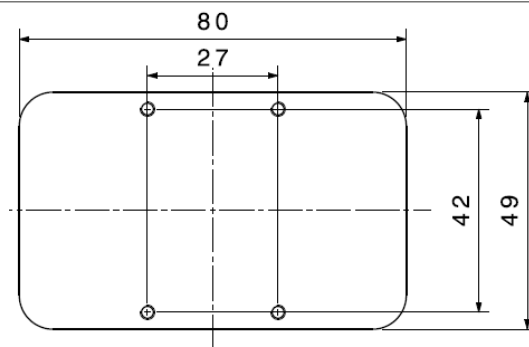
Description

The KPL200 has been specially developed for applications that require intensive LED backlight or LED front-light. The illumination can be used, for example, for completeness checks, fill level checks or presence checks. The lighting has been designed to save space. The In-Sight system is controlled via the supplied cable. The flash mode achieves a high light intensity and prevents the LEDs from overheating.

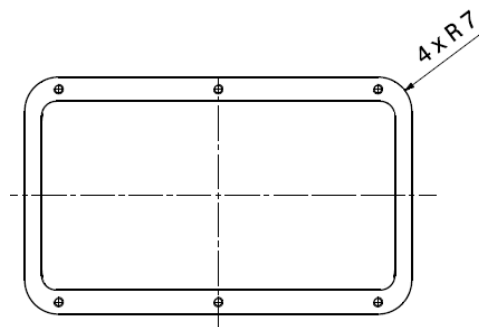
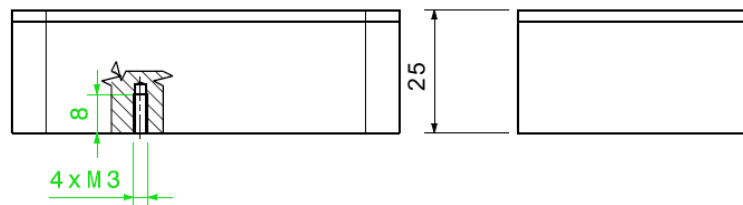


Due to the large number of LEDs and the possibility of very short pulse times, an almost complete independence from ambient light influences can be ensured, even at longer distances. The housing milled from solid material and the bonded protective pane guarantee protection class IP65, making it suitable for use in harsh environments.

Dimensions (mm)



Bottom view



Top view

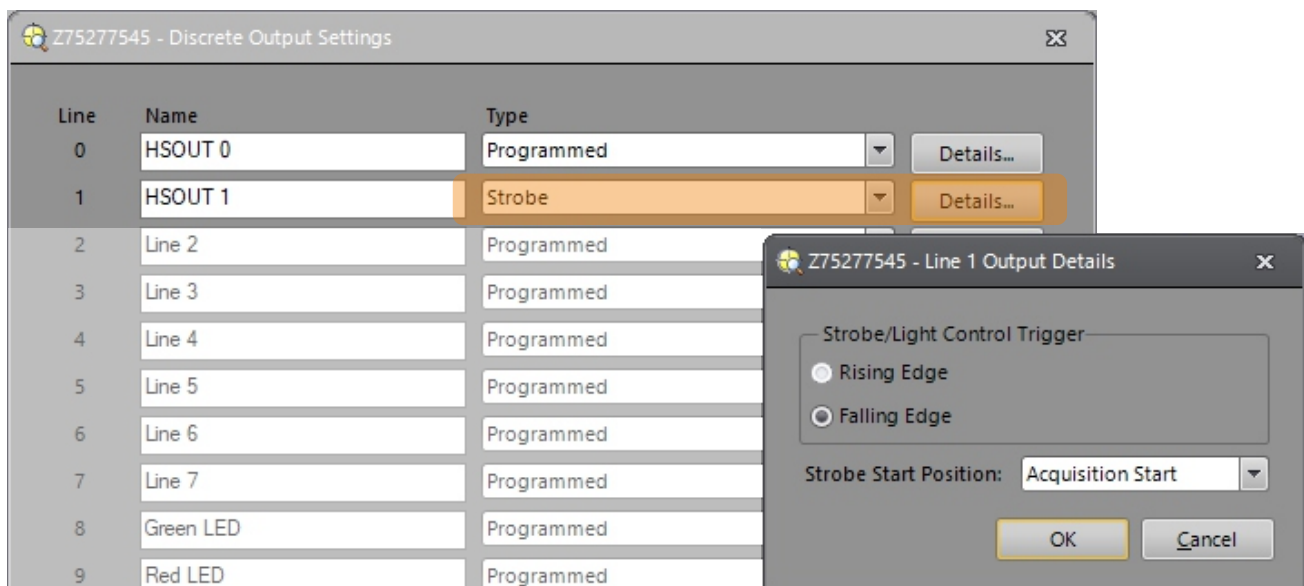
Montage

The KPL200 lighting can be mounted in different ways using M3x8 screws. In addition, an optional mounting plate is available, with which the KPL200 lighting can be mounted on profiles or joints using an M6 screw.

Connection cables with straight or angled plugs are available for flexible and individual installation. The 4-pole connection cable is connected to the housing plug of the KPL200. The supply voltage, trigger and active signal are connected via the connection cable.

Configuration in the In-Sight Explorer

In-Sight Explorer Menu: Sensor/Discrete Output Settings/Output 1



Line	Name	Type
0	HSOUT 0	Programmed
1	HSOUT 1	Strobe
2	Line 2	Programmed
3	Line 3	Programmed
4	Line 4	Programmed
5	Line 5	Programmed
6	Line 6	Programmed
7	Line 7	Programmed
8	Green LED	Programmed
9	Red LED	Programmed

Z75277545 - Line 1 Output Details

Strobe/Light Control Trigger:

Rising Edge

Falling Edge

Strobe Start Position: Acquisition Start

OK Cancel

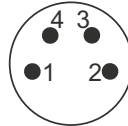
Technical data

Operating voltage	24 VDC
Current consumption	max. 1,1 A (pulse)
Trigger level low	0 ... ≤ 10 V
Trigger level high	≥ 14 ... 25 V
Operating temperature	0 bis 45 °C
Protection class	IP 50
Storage temperature	- 40 bis 85 °C
Maximum trigger time	Pulse width ≤10 ms and duty cycle ≤10 %

The pulse time is monitored by an internal protective circuit.

Pin assignment

Connection socket
(M12 female)



PIN	Signal	Cable color	Connection
1	VDC (+24 VDC)	brown	+24 VDC
2	GND (Ground)	blue	Ground
3	ACT (Active)	black	+24 VDC if LED active, else Ground
4	TRG (Trigger)	white	HSOUT 1 In-Sight System



Warnings and safety instructions

Do not stare into beam.

This device produces light of high intensity. It may be harmful if exposed to prolonged exposure.

Ensure sufficient heat convection.

Clean the device regularly and do not cover it.

Do not disassemble the device and do not operate it without the protective screen.

Heavily contaminated glass prevents the light emission and increases the heat generation.

If the temperature of the lighting is permanently too high, the lifetime of the LEDs may be reduced.

Always adjust the flash duration according to the application.



Krempien+Petersen
Qualitäts-Kontrollsysteme GmbH
Rungedamm 22
21035 Hamburg
Germany

Phone: +49 40 70 10 34 0
www.kup-image.de
info@kup-image.de



Made in Germany

Subject to change without notice