

# KPL310

LED backlight / LED frontlight



Version 1.1

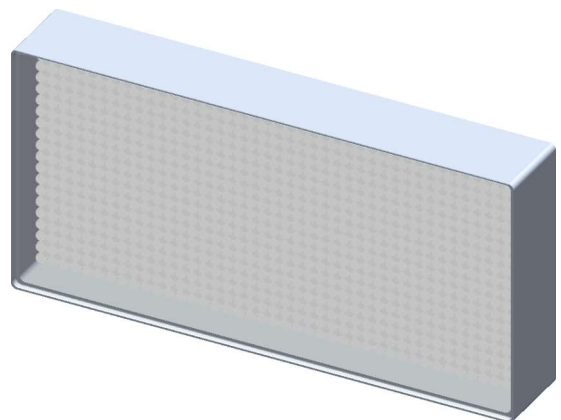
## KPL310

Krempien+Petersen Qualitäts-Kontrollsysteme GmbH



### Features

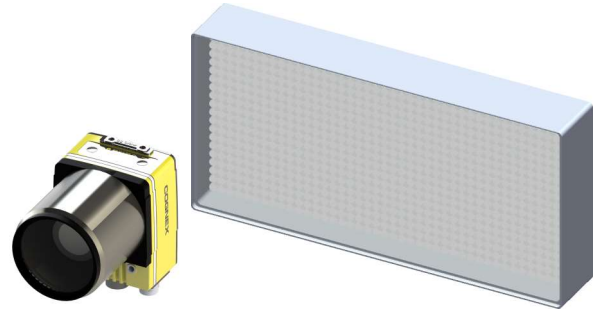
- Very high light intensity
- 840 high-power LEDs (42 x 20)
- Direct triggering by the camera
- Flashmode in overcurrent range
- Can be used up to a distance of 1.5 meters
- Flash duration between 16  $\mu\text{s}$ <sup>1</sup> and 10 ms
- Closed compact industrial housing
- Simple mounting on the rear panel
- Protection class IP65



<sup>1</sup> depends on camera model

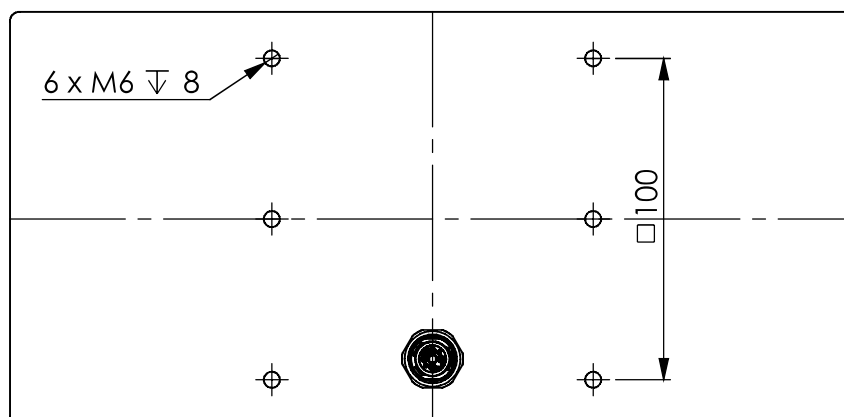
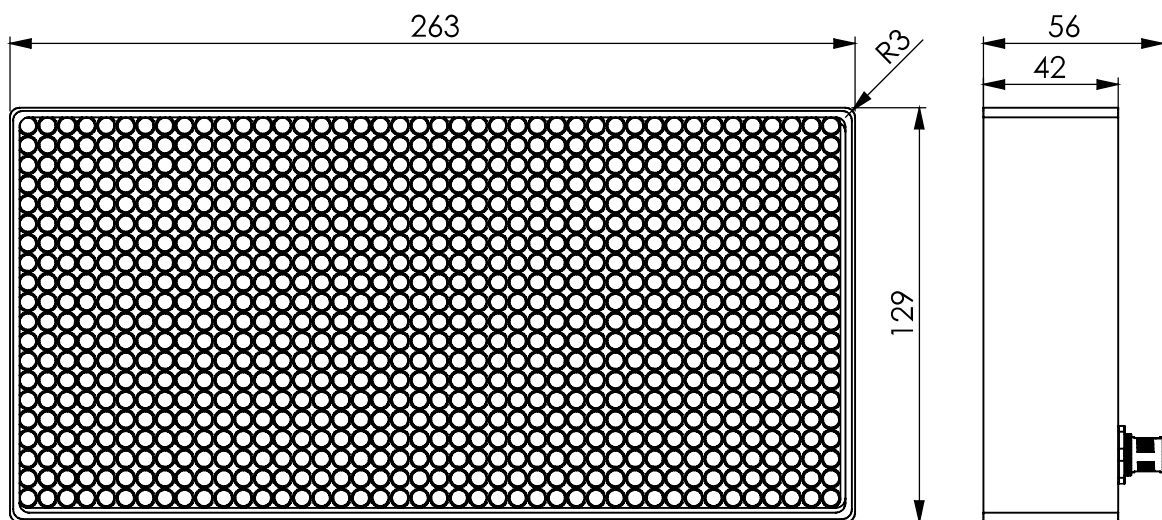
## Description

The KPL310 has been specially developed for applications that require intensive LED backlight or LED front-light. The illumination can be used, for example, for completeness checks, fill level checks or presence checks. The lighting has been designed to save space. The In-Sight system is controlled via the supplied cable. The flash mode achieves a high light intensity and prevents the LEDs from overheating.



Due to the large number of LEDs and the possibility of very short pulse times, an almost complete independence from ambient light influences can be ensured, even at longer distances. The housing milled from solid material and the bonded protective pane guarantee protection class IP65, making it suitable for use in harsh environments.

## Dimensions (mm)



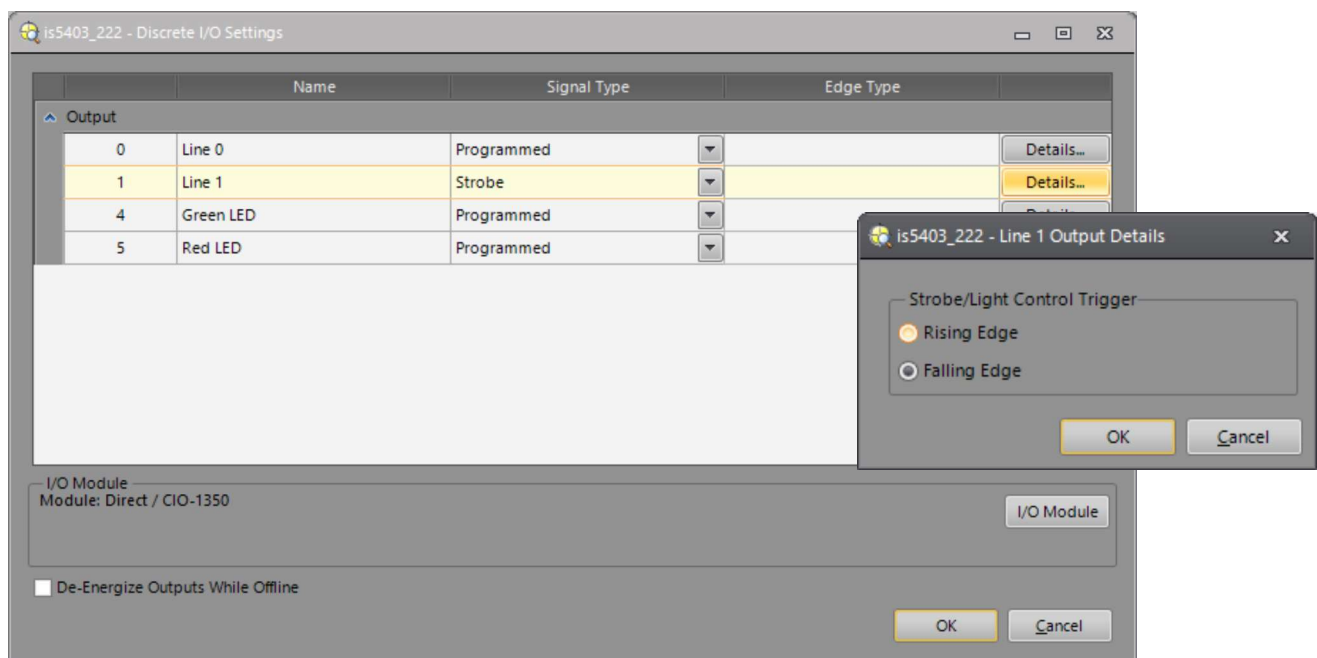
## Assembly instruction

The KPL310 lighting can be mounted in different ways using M6x8 screws. Connection cables with straight or angled plugs are available for flexible and individual installation.

The 4-pole connection cable is connected to the housing plug of the KPL310. The supply voltage, trigger and active signal are connected via the connection cable.

## Configuration in the In-Sight Explorer

In-Sight Explorer Menu: Sensor/Discrete I/O Settings/Output 1



## Technical data

Operating voltage 24 VDC

Current consumption max. 10 A (pulse)

Trigger level low  $0 \dots \leq 10 \text{ V}$

Trigger level high  $\geq 14 \dots 25 \text{ V}$

Operating temperature  $0 \text{ to } 45 \text{ }^{\circ}\text{C}$

Protection class IP 65

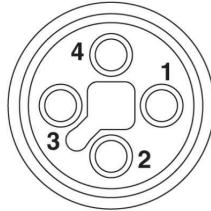
Storage temperature  $-40 \text{ to } 85 \text{ }^{\circ}\text{C}$

Maximum trigger time Pulse width  $\leq 10 \text{ ms}$  and duty cycle  $\leq 10 \%$

The pulse time is monitored by an internal protective circuit.

## Pin assignment

Connection socket  
(M12 female)



Female socket view



PIN	Signal	Cable color	Connection
1	VDC (+24 VDC)	brown	+24 VDC
2	TRG (Trigger)	white	HSOUT 1 In-Sight System
3	GND (Ground)	blue	Ground
4	ACT (Active)	black	+24 VDC if LED active, else Ground



## Warnings and safety instructions

Do not stare into beam.

This device produces light of high intensity. It may be harmful if exposed to prolonged exposure.

Ensure sufficient heat convection.

Clean the device regularly and do not cover it.

Do not disassemble the device and do not operate it without the protective screen.

Heavily contaminated glass prevents the light emission and increases the heat generation.

If the temperature of the lighting is permanently too high, the lifetime of the LEDs may be reduced.

Always adjust the flash duration according to the application.



Krempien+Petersen  
Qualitäts-Kontrollsysteme GmbH  
Achterdwers 30  
D-21035 Hamburg

Phone: +49 40 70 10 34 0  
www.kup-image.de  
info@kup-image.de



Made in Germany

Subject to change without notice